



Exergames for women with fibromyalgia: a randomised controlled trial to evaluate the effects on mobility skills, balance and fear of falling

Daniel Collado-Mateo¹, Francisco J. Dominguez-Muñoz¹, Jose C. Adsuar¹, Eugenio Merellano-Navarro² and Narcis Gusi¹

¹ Faculty of Sport Science, Departamento de Didáctica de la Expresión Musical, Plástica y Corporal, University of Extremadura, Cáceres, Spain

² Facultad de Educación, Universidad Autónoma de Chile, Talca, Chile

ABSTRACT

Background. Exergames are a new form of rehabilitation that combine the characteristics of physical exercise and the benefits of non-immersive virtual reality (VR). Effects of this novel therapy in women fibromyalgia are still unknown. The objective was to evaluate the effects of exergame-based intervention on mobility skills, balance and fear of falling in women with fibromyalgia.

Methods. This study was a randomized controlled trial with concealed allocation. Seventy-six women with fibromyalgia were divided into two groups: the exercise group received an eight week intervention based on exergames, while the control group continued their usual activities. Mobility skills were evaluated using the timed up and go test, while balance was assessed using the functional reach test, and the CTSIB protocol. Fear of falling was evaluated on a scale of 0–100 (0, no fear; 100, extreme fear). Measurements were performed before and after the intervention. A repeated-measures linear mixed model was used to compare the effects of the intervention between the two groups.

Results. The exercise group was significantly quicker than the control group in the timed up and go test (MD, -0.71 ; 95% CI $[-1.09-0.32]$; $p < 0.001$). There were also significant improvements in functional reach and a reduced fear of falling (MD, 4.34 ; 95% CI $[1.39-7.30]$; $p = 0.005$ and MD, -9.85 ; 95% CI $[-0.19-0.08]$; $p = 0.048$, respectively).

Discussion. The improved TUG observed herein was better than the smallest real difference. Based on the results on mobility skills, balance and fear of falling, exergames may be an effective tool as a therapy for women with fibromyalgia.

Submitted 20 December 2016

Accepted 21 March 2017

Published 20 April 2017

Corresponding author

Daniel Collado-Mateo,
dcolladom@unex.es

Academic editor

Rodrigo Ramírez-Campillo

Additional Information and
Declarations can be found on
page 10

DOI 10.7717/peerj.3211

© Copyright

2017 Collado-Mateo et al.

Distributed under

Creative Commons CC-BY 4.0

OPEN ACCESS

Subjects Clinical Trials, Kinesiology, Women's Health

Keywords Falls, Virtual reality, Chronic pain, Postural control

INTRODUCTION

Fibromyalgia (FM) is a chronic syndrome characterized by widespread pain and other symptoms such as fatigue, trouble sleeping, anxiety, depression, impaired balance, stiffness, a high risk of falling, and poor physical fitness (*Walker, 2016; Wolfe et al., 2010*), all of which

have a significant impact on quality of life (*Huijnen et al., 2014*). The estimated overall prevalence of FM in the general European population ranges from 2.9% to 4.7% (*Branco et al., 2010*), while it is lower in the United States (about 1.75%; 95% CI [1.42–2.07]) (*Walitt et al., 2015*). FM mostly affects women, who often experience higher levels of pain. On the other hand, men show higher disability and reduced physical function (*Castro-Sanchez et al., 2012*). Furthermore, men and women show different responses to therapy (*Lami et al., 2016*).

Treatment of fibromyalgia typically involves a combination of pharmacological and non-pharmacological approaches. According to *Walker (2016)* the main objectives are to improve the ability to perform activities of daily living by increasing physical function and reducing pain levels, which often lead to an improvement in quality of life. Exercise is usually the first step of a multidisciplinary approach (*Walker, 2016*). The effects of exercise on physical function (including balance and mobility skills) of women with FM are well documented. However, the effect size ranges from small to large depending on the type of exercise and the outcome measure used (*Bidonde et al., 2014b*). Although therapies based on whole body vibration (*Adsuar et al., 2012*), aquatic training (*Tomas-Carus et al., 2009*), or balance exercise training (*Duruturk, Tuzun & Culhaoglu, 2015*) effectively improve static and dynamic balance in women with FM, adherence to these exercise-based interventions is frequently poor (*Oliver & Cronan, 2002*); therefore, more motivating and enjoyable alternatives are required (*Mortensen et al., 2015*).

Exergames are a form of rehabilitation that combine the characteristics of physical exercise and the benefits of non-immersive virtual reality (VR) (*Skip Rizzo et al., 2011*), such as distraction from pain or enjoyment (*Mortensen et al., 2015*). This therapeutic modality has been used in older adults to improve fear of falling and balance during quiet standing under eyes open and eyes closed conditions (*Gschwind et al., 2015; Van Diest et al., 2016*). Exergames may be a motivating and enjoyable alternative form of rehabilitation (*Burke et al., 2009; Herrero et al., 2014; Mortensen et al., 2015*). However, to the best of our knowledge, no randomized controlled trial has examined the effects of exergames on patients with FM.

Therefore, the objective of this randomized controlled trial was to evaluate the effects of exergame-based intervention on mobility skills, balance and fear of falling in women with fibromyalgia.

MATERIALS & METHODS

Design

This randomized controlled trial was registered in the Australian New Zealand Clinical Trials Registry, ACTRN12615000836538. Two groups were included: an exercise group (EG) and a control group (CG). All patients were provided with written informed consent to participate and the study protocol was approved by the Committee of Bioethics of the University of Extremadura in May 2015 (reference number 61/2015). Randomisation and group allocation were performed by a single researcher. Allocation was concealed. Randomisation was based on computer-generated random code numbers. Half of the

numbers were randomly assigned to the CG and the rest were assigned to the EG. The researchers in charge of evaluation were blind to this process. Participants were not blinded as they had been informed about the protocol and knew whether or not they were performing physical exercise.

Participants

The sample size was calculated to assess the effects of the intervention on impact of FM. This variable is often assessed using the FM impact questionnaire (FIQ) (Bennett, 2005). The minimum clinically important reduction in the FIQ was set at 14% of the total FIQ score, as described previously (Bennett et al., 2009a). For calculation purposes, the estimated mean FIQ was 70.5 ± 11.8 , which was based on data from a previous study of a Spanish cohort (Esteve-Vives et al., 2007). Initially, the minimum power for detecting between-group differences of at least 14% was set at 85%, with an α value of 0.05. Based on these parameters, a minimum of 26 participants per group was necessary. No maximum number was set. A total of 83 women with FM fulfilled the inclusion criteria and were randomly assigned to the two groups. A maximum loss to follow-up of 15% was assumed. With respect to the main outcome measure (i.e., the TUG), the mean, standard deviation (SD), and smallest real difference were extracted from a previous study based on Spanish women with FM (Collado-Mateo et al., 2016). Assuming a mean (SD) of 6.791 (0.830), a difference of at least 9.33% (smallest real difference), with a power of 88% and an α value of 0.05 based on two groups (EG and CG), could be detected using a sample size of 35 participants per group.

Recruitment started in November 2015 and final measurements were carried out in May 2016. Recruitment was performed at two local FM associations. The inclusion criteria were as follows: (a) female, (b) aged 30–75 years, (c) diagnosed with FM by a rheumatologist according to the criteria of the American College of Rheumatology (Wolfe et al., 2010; Wolfe et al., 1990), (d) able to communicate effectively with the study staff, and (e) had read, understood, and signed the written informed consent form. Participants were excluded if they: (a) were pregnant, (b) changed their usual care therapies during the eight weeks of treatment, and, (c) had contraindications for physical exercise. Participants could abandon the study if (a) they withdrew informed consent, (b) the researcher or their general practitioner felt that they should withdraw from the study for reasons of safety, or (c) the participant did not attend at least 75% of the sessions.

Intervention

The intervention comprised eight weeks of VR-based physical exercise. The EG performed this activity twice a week for 1 h per session, whereas the CG received no treatment and continued their usual activities. All sessions were performed at the local association's facilities. To increase the motivational and social component, exercises were performed in groups of three, with each person interacting with their own device. Intervention was based on an exergame called VirtualEx-FM, which was designed by the research group to improve physical conditioning of women with FM and increase their ability to perform activities of daily living. This exergame is based on Microsoft Kinect[®], which connects to

a computer and serves as the input sensor for tracking the movements of the participant. The software is run in the computer and contains a control panel through which the targets and difficulty can be modified. The system provides immediate visual feedback about the extent their movements fit the required patterns.

VirtualEx-FM provides three different virtual environments:

- (a) The first comprises a warm-up followed by the aerobic part of the session. The participant has to imitate the movements that appear on the screen, which are performed by a professional kinesiologist and dance teacher, recorded, and stored in a software directory. Files can be removed, added, and modified as needed. Additionally, the playback speed can be manually controlled (0.5×, 1×, 1.5×, and 2×). In general, there were two types of video: warm-up videos based on full body joint movements, and dancing videos. The latter were based on Zumba, which is a fusion of aerobics and salsa.
- (b) The second environment focuses on postural control and coordination. Participants interact with an apple that appears and disappears around them. The position at which the apple appears can be manually programmed by the technician. The sequence of which parts of the body interact with the apple can also be controlled and modified.
- (c) The aim of the third environment is to improve mobility skills, balance and coordination. Participants are asked to step on virtual footprints. The distance between the footprints is controlled by the technician. The interface allows the technician to choose different types of steps: normal, tiptoe, heel-walking, raising the knees, and raising the heels.

The preferences ([Lewis & Rosie, 2012](#)) and needs ([Bidonde et al., 2014a](#)) of women with FM were considered when training in the three environments. Furthermore, VirtualEx-FM fulfilled the eight key points proposed by [Lewis & Rosie \(2012\)](#) for enhancing the efficacy of VR-based systems to optimize the rehabilitation benefits. These key points include all aspects related to the interface, social interaction, therapeutically principled movement patterns, progressively challenging games, and immediate feedback.

Outcome variables

All evaluations were performed in a laboratory at the university. Baseline data included age, years since FM diagnosis, BMI, and impact of FM as assessed by the revised version of the FM impact questionnaire (FIQ-R) ([Bennett et al., 2009b](#)).

Primary outcome

The timed up and go (TUG) ([Podsiadlo & Richardson, 1991](#)) test was used to assess mobility skills. The time taken by participants to rise from a chair, walk 3 m, turn around, walk back to the chair, and sit down again was measured. The best of three repetitions was recorded.

Secondary outcomes

Other variables were balance and fear of falling. Balance was evaluated using the functional reach (FR) and the Clinical Test of Sensory Integration of Balance (CTSIB) tests ([Di Fabio & Seay, 1997](#)). Fear of falling was assessed on a visual analogue scale, ranging from 0 to 100, where 0 was “no fear” and 100 was “extreme fear” ([Scheffer et al., 2010](#)).

Table 1 Baseline characteristics of the study participants.

| Variable (mean, SD) | EG (<i>n</i> = 41) | CG (<i>n</i> = 35) |
|-------------------------------|---------------------|---------------------|
| Age (years) | 52.43 (9.83) | 52.58 (9.42) |
| Age distribution | | |
| ≤40 (frequency and %) | 4 (9.8%) | 3 (8.6%) |
| 41–60 (frequency and %) | 28 (68.3%) | 24 (68.6%) |
| ≥60 (frequency and %) | 9 (22%) | 8 (22.9%) |
| Years since diagnosis (years) | 10.36 (7.30) | 12.48 (5.63) |
| BMI (kg/m ²) | 25.79 (5.14) | 27.75 (5.62) |
| Waist:hip ratio | 0.85 (0.07) | 0.86 (0.06) |
| FIQ-R | 46.21 (16.49) | 43.64 (18.18) |

Notes.

EG, Exercise group; CG, Control group; TUG, Timed-Up-Go; EOFS, eyes open on a firm surface; ECFS, eyes closed on a firm surface; EOUS, eyes open on an unstable surface; ECUS, eyes closed on an unstable surface; BMI, Body Mass Index.

The CTSIB is a widely used balance protocol and was conducted using the Biodex Balance System (Shirley, NY, USA). The test comprises four conditions: eyes open on a firm surface, eyes closed on a firm surface, eyes open on an unstable surface, and eyes closed on an unstable surface. Participants have to maintain their feet on the platform during the 30 s test, with a rest of 10 s between the different conditions. Higher sway indices would mean poorer balance. The FR (*Duncan et al., 1990*) measures the maximum distance participants can reach forward beyond arms' length while keeping their feet on the floor, hip width apart. Two repetitions were performed and the best of them was analysed.

Data analysis

The mean effect (SD) for each group was calculated by subtracting the pre-intervention scores from the post-intervention scores. Between-group changes were calculated by subtracting the effects reported for the CG from the effects observed for the EG. A repeated-measures linear mixed model was used to compare the effects of the intervention between groups. Effect size was considered as low (<0.2), medium (>0.2 and <0.8) or large (>0.8) (*Cohen, 1988*).

Each group was divided into two subgroups to identify differences between women with and without fear of falling. For that purpose, the cut-off point was set at 50 because a previous study reported a mean of 48.88 in the VAS for women with fibromyalgia (*Collado-Mateo et al., 2015*).

RESULTS

The flow of participants is shown in [Fig. 1](#). In total, 86 women were screened and three were excluded for not meeting the inclusion criteria. These three women belonged to the association and suffered from fatigue and pain, but they were not diagnosed with FM by a rheumatologist. Therefore, 83 women were randomized into the EG (*n* = 42) and CG (*n* = 41). [Table 1](#) summarizes the main baseline characteristics of both groups.

Regarding the compliance with the treatment, forty-one of the forty-two women allocated to EG completed the intervention, which means that 2.38% of women from this group

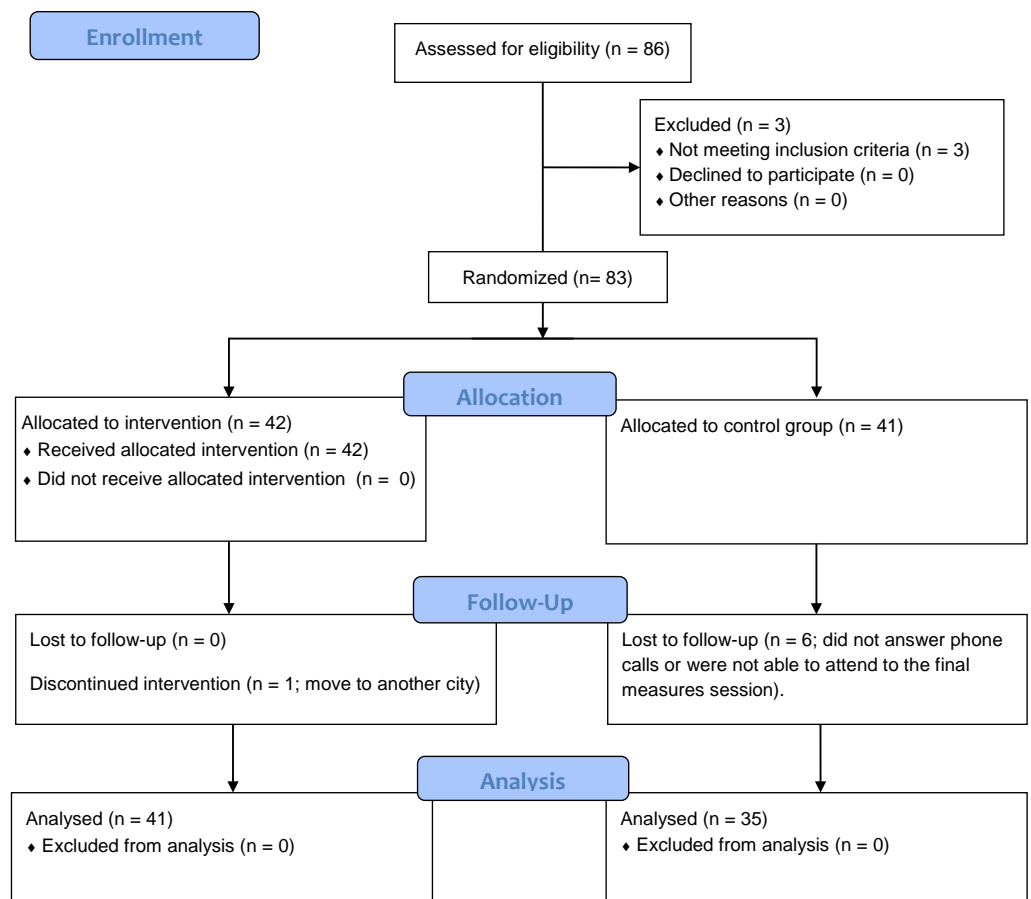


Figure 1 Flow of participants.

were lost to follow up. The cause of this loss was a change of residence. In the CG, 35/41 women attended the post-intervention session, meaning a loss of 14.63%. Intervention was considered complete when participants attended a minimum of 75% of sessions. Only one of the researchers was aware of the group to which each participant belonged. This researcher did not conduct the final measurements. No adverse effects were noted.

Table 2 compares the groups in terms of primary and secondary outcomes. For the TUG, the time taken for the EG to complete the test at the end of the study was 0.49 s (SD, 0.63) quicker than that at baseline. The time for the CG actually increased slightly (from 6.71 s at baseline to 6.93 s after the intervention). Therefore, the effect of exergames on the primary outcome was estimated as -0.71 (95% CI $[-1.09-0.32]$), meaning a significant improvement of 10.61% ($p < 0.001$).

In the CTSIB protocol, the improvement was significantly higher for the EG only under the condition of eyes closed on an unstable surface ($p = 0.036$). Results from the ANOVA almost reached significance for the condition of eyes closed on a stable surface condition and of eyes open on an unstable surface ($p = 0.066$ and 0.055 , respectively). Significant improvement was observed in the FR test ($p = 0.005$), the EG improved by 3.53 cm (an improvement of 23.58%), whereas the CG deteriorated by 1.06 cm.

Table 2 Effects of the 8-week training program on the VirtualEx-FM exergame and control groups ($n = 76$).

| | EG ($n = 41$) | | CG ($n = 35$) | | Differences between interventions [mean (95% CI)] ^a | F-value | P-value ^a | P-value (age as covariate) | Effect size |
|-----------------------|-----------------------------|------------------------------|-----------------------------|------------------------------|--|---------|----------------------|----------------------------|-------------|
| | Pre-intervention, mean (SD) | Post-intervention, mean (SD) | Pre-intervention, mean (SD) | Post-intervention, mean (SD) | | | | | |
| TUG (s) | 6.69 (0.90) | 6.19 (0.61) | 6.71 (0.78) | 6.93 (1.13) | -0.71 (-1.09-0.32) | 13.692 | <0.001 | <0.001 | 0.86 |
| Balance EOFS (°) | 0.53 (0.20) | 0.58 (0.22) | 0.67 (0.34) | 0.67 (0.53) | 0.05 (-0.08-0.19) | 0.637 | 0.427 | 0.432 | 0.19 |
| Balance ECFS (°) | 0.99 (0.53) | 0.85 (0.51) | 0.98 (0.67) | 1.08 (0.95) | -0.24 (-0.50-0.01) | 3.480 | 0.066 | 0.067 | 0.41 |
| Balance EOUS (°) | 1.18 (0.42) | 1.00 (0.22) | 1.23 (0.62) | 1.21 (0.62) | -0.16 (-0.33-0.00) | 3.802 | 0.055 | 0.056 | 0.31 |
| Balance ECUS (°) | 3.25 (0.93) | 2.76 (0.66) | 2.79 (1.76) | 2.73 (1.19) | -0.42 (-0.82-0.02) | 4.555 | 0.036 | 0.037 | 0.32 |
| Functional reach (cm) | 19.71 (7.54) | 23.00 (5.15) | 19.49 (5.70) | 18.43 (6.62) | 4.34 (1.39-7.30) | 8.582 | 0.005 | 0.005 | 0.65 |
| Fear of falling | 26.10 (28.53) | 21.09 (25.92) | 28.57 (30.40) | 33.42 (32.17) | -9.85 (-0.19-0.08) | 4.044 | 0.048 | 0.048 | 0.34 |

Notes.

EG, Exercise group; CG, Control group; TUG, Timed-Up-Go; EOFS, eyes open on a firm surface; ECFS, eyes closed on a firm surface; EOUS, eyes open on an unstable surface; ECUS, eyes closed on an unstable surface.; SD, Standard deviation..

^aDifferences between interventions: calculated as (post-intervention EG—pre-intervention EG)—(post-intervention CG—pre-intervention CG).

^aP-values calculated using analysis of variance (ANOVA) for repeated measures.

Finally, the score for fear of falling in the EG fell from 26.10 to 21.09, while that in the CG increased from 28.57 to 33.42. Results from the ANOVA reached significance ($p = 0.048$). As shown in [Table 3](#), the reduction was highest in participants with the greatest fear of falling. The most fearful in the EG reduced their score from 63.46 to 43.84, a reduction of 30%.

DISCUSSION

This is the first randomized controlled trial to examine the utility of exergames as a therapy for improving mobility skills and balance in people with FM. These variables were improved through challenging exercises performed using a VR system. The improved TUG observed herein was slightly better than the smallest real difference reported in a previous study of women with FM ([Collado-Mateo et al., 2016](#)), which was reported as 9.33%. Therefore, the improvement in mobility skills can be considered relevant. The rest of the measures assessed in the present study focused on static balance, since both the CTSIB protocol and the FR test are performed without displacement of the feet. The baseline sway indices for each condition in the CTSIB protocol were better than those reported in a previous study of women with FM ([Collado-Mateo et al., 2015](#)); the exception was the condition “eyes closed on an unstable surface”. In the present study, this condition was significantly improved from 3.25° at baseline (note that in the previous study, the mean sway index for women aged >60 was 3.29°) to 2.76° (in the previous study, the mean value for women with FM aged <50 was 2.77°). Therefore, balance performance under the condition of standing with eyes closed on an unstable surface changed from 3.25° (close to the mean for patients aged >60) to 2.76° (close to the mean for patients aged <50). The improvement in the FR test was also significant, with a between-group change of more than 23%.

Physical inactivity and a sedentary lifestyle are common in FM patients, which may be aggravated by a greater fear of falling. This is especially relevant in this population, where around 72% are overweight ([Segura-Jimenez et al., 2015](#)). By reducing the fear of falling, women with FM may be able to increase their participation in physical, social, and other types of activity, thereby improving their quality of life.

The impact of fear of falling on the activities of daily living of women with FM was examined by [Rutledge et al. \(2013\)](#): persons with FM often reported frustration because they want to continue normal activities but are not able due to fear of falling. The reduction of fear of falling in the EG was almost 20%, which may be interpreted as a great improvement. In the present study, fear of falling at baseline was lower than that reported in a previous study ([Collado-Mateo et al., 2015](#)) in which the score ranged from 37 to 55. To explore this improvement more deeply, the cohort was divided into two groups: women that scored ≥ 50 on the fear of falling scale and those that scored <50 . Those in the EG with the greatest fear reduced their score from 63.46 to 43.84, an improvement of almost 20 points. On the other hand, the score for the group with the least fear increased from 8.75 to 10.53. This was not observed for the CG, in which the improvement in the higher fear group was less than 5%, while the score for the low fear group increased by 7.4 points. Therefore, exergames have a large effect on fear of falling in women that already experience higher levels of fear. By contrast, they have little effect on those with low levels of fear.

Table 3 Effects of VirtualEx-FM on fear of falling in the exergame and control groups ($n = 76$).

| | Fearless EG (fear of falling < 50; $n = 28$) | | Fearless CG (fear of falling < 50; $n = 27$) | | Difference between intervention (virtual minus control) [*] | P-value interaction ^a | Effect size |
|-----------------|---|------------------------------|---|------------------------------|--|----------------------------------|-------------|
| | Pre-intervention, mean (SD) | Post-intervention, mean (SD) | Pre-intervention, mean (SD) | Post-intervention, mean (SD) | | | |
| Fear of falling | 8.75 (12.29) | 10.53 (18.97) | 14.44 (14.76) | 21.85 (25.87) | -5.62 (-16.09-4.85) | 0.287 | 0.28 |
| | Fearful EG (fear of falling > 50; $n = 13$) | | Fearful CG (fear of falling > 50; $n = 8$) | | Differences between interventions (virtual minus control) | P-value interaction | Effect size |
| | Pre-intervention, mean (SD) | Post-intervention, mean (SD) | Pre-intervention, mean (SD) | Post-intervention, mean (SD) | | | |
| Fear of falling | 63.46 (12.64) | 43.84 (24.67) | 76.25 (17.67) | 72.50 (16.69) | -15.86 (-36.17-4.44) | 0.119 | 1.13 |

Notes.

EG, Exercise group; CG, Control group; SD, Standard deviation.

^{*}Differences between interventions: calculated as (post-intervention EG—pre-intervention EG)—(post-intervention CG—pre-intervention CG).

^aP-values calculated using analysis of variance (ANOVA) for repeated measures.

The effect of age on balance and mobility skills is well documented. The present study included women aged between 30 and 71, which is a wide range. Although the mean (SD) and distribution of age was extremely similar in EG and CG, further attempts to evaluate the role of age on the treatment effects were performed. First, “age” was included as a covariate in the model, which led to only minimal changes in the p-values (see [Table 2](#)). Second, a correlation analysis of the relationship between the treatment effects and age was performed. No statistically significant correlation was observed. Therefore, the effects of exergame on mobility skills and balance seem not to have been influenced by age in the current study. However, future studies should include different age groups or restrict the age range.

Two main limitations should be mentioned. First, only women were included in the study due to potential gender differences ([Castro-Sanchez et al., 2012](#); [Lami et al., 2016](#)). Therefore, the effects and applicability of exergame intervention on men with FM remain unknown. Second, the study lacked an active CG. However, given the well-known effects of different types of exercise on FM, effect sizes can be compared with those reported in the scientific literature.

CONCLUSIONS

Exergames are an effective tool for improving mobility skills, balance and fear of falling in women with FM. The improvement in the TUG was better than the smallest real difference. Regarding balance, significant improvements were observed in FR and in the CTSIB with eyes closed on an unstable surface. These results, along with high adherence (only one participant abandoned the intervention), indicate that exergames may be a feasible alternative form of rehabilitation therapy for improving balance and mobility problems in this population.

ADDITIONAL INFORMATION AND DECLARATIONS

Funding

In the framework of Spanish National R+D+i Plan, the current study has been co-funded by the Spanish Ministry of Economy and Competitiveness with the reference DEP2012-39828 and DEP2015-70356. This study has been also co-funded by the Government of Extremadura and European Union Regional Development Funds (FEDER), a way of making Europe (ref. GR10127). The author DCM is supported by a grant from the Spanish Ministry of Education, Culture and Sport (FPU14/01283). The funders had no role in study design, data collection and analysis, decision to publish, or preparation of the manuscript.

Grant Disclosures

The following grant information was disclosed by the authors:

Spanish Ministry of Economy and Competitiveness: DEP2012-39828, DEP2015-70356.

Government of Extremadura and European Union Regional Development Funds (FEDER): GR10127.

Spanish Ministry of Education, Culture and Sport: FPU14/01283.

Competing Interests

The authors declare there are no competing interests.

Author Contributions

- Daniel Collado-Mateo and Jose C. Adsuar conceived and designed the experiments, performed the experiments, analyzed the data, contributed reagents/materials/analysis tools, wrote the paper, reviewed drafts of the paper.
- Francisco J. Dominguez-Muñoz conceived and designed the experiments, performed the experiments, analyzed the data, contributed reagents/materials/analysis tools, prepared figures and/or tables, reviewed drafts of the paper.
- Eugenio Merellano-Navarro performed the experiments, analyzed the data, contributed reagents/materials/analysis tools, wrote the paper, prepared figures and/or tables, reviewed drafts of the paper.
- Narcis Gusi conceived and designed the experiments, analyzed the data, contributed reagents/materials/analysis tools, reviewed drafts of the paper.

Human Ethics

The following information was supplied relating to ethical approvals (i.e., approving body and any reference numbers):

The University of Extremadura granted Ethical approval to carry out the study. Reference number 61/2015.

Clinical Trial Ethics

The following information was supplied relating to ethical approvals (i.e., approving body and any reference numbers):

The University of Extremadura granted Ethical approval to carry out the study. Reference number 61/2015.

Data Availability

The following information was supplied regarding data availability:

The raw data has been supplied as a [Supplementary File](#).

Clinical Trial Registration

The following information was supplied regarding Clinical Trial registration:

Australian New Zealand Clinical Trials Registry, ACTRN12615000836538.

Supplemental Information

Supplemental information for this article can be found online at <http://dx.doi.org/10.7717/peerj.3211#supplemental-information>.

REFERENCES

- Adsuar JC, Del Pozo-Cruz B, Parraca JA, Olivares PR, Gusi N. 2012. Whole body vibration improves the single-leg stance static balance in women with fibromyalgia: a randomized controlled trial. *The Journal of Sports Medicine and Physical Fitness* 52(1):85–91.

- Bennett R. 2005.** The Fibromyalgia Impact Questionnaire (FIQ): a review of its development, current version, operating characteristics and uses. *Clinical and Experimental Rheumatology* 23(5 Suppl 39):S154–S162.
- Bennett RM, Bushmakin AG, Cappelleri JC, Zlateva G, Sadosky AB. 2009a.** Minimal clinically important difference in the fibromyalgia impact questionnaire. *The Journal of Rheumatology* 36(6):1304–1311 DOI 10.3899/jrheum.081090.
- Bennett RM, Friend R, Jones KD, Ward R, Han BK, Ross RL. 2009b.** The Revised Fibromyalgia Impact Questionnaire (FIQR): validation and psychometric properties. *Arthritis Research & Therapy* 11(4):R120 DOI 10.1186/ar2783.
- Bidonde J, Busch AJ, Bath B, Milosavljevic S. 2014a.** Exercise for adults with fibromyalgia: an umbrella systematic review with synthesis of best evidence. *Current Rheumatology Reviews* 10(1):45–79 DOI 10.2174/1573403X10666140914155304.
- Bidonde J, Busch AJ, Webber SC, Schachter CL, Danyliw A, Overend TJ, Richards RS, Rader T. 2014b.** Aquatic exercise training for fibromyalgia. *The Cochrane Database of Systematic Reviews* 10: CD011336 DOI 10.1002/14651858.CD011336.
- Branco JC, Bannwarth B, Failde I, Abello Carbonell J, Blotman F, Spaeth M, Saraiva F, Nacci F, Thomas E, Caubère JP, Le Lay K, Taieb C, Matucci-Cerinic M. 2010.** Prevalence of fibromyalgia: a survey in five European countries. *Seminars in Arthritis and Rheumatism* 39(6):448–453 DOI 10.1016/j.semarthrit.2008.12.003.
- Burke JW, McNeill MDJ, Charles DK, Morrow PJ, Crosbie JH, McDonough SM. 2009.** Optimising engagement for stroke rehabilitation using serious games. *The Visual Computer* 25(12):1085–1099 DOI 10.1007/s00371-009-0387-4.
- Castro-Sanchez AM, Mataran-Penarrocha GA, Lopez-Rodriguez MM, Lara-Palomo IC, Arendt-Nielsen L, Fernandez-de-las Penas C. 2012.** Gender differences in pain severity, disability, depression, and widespread pressure pain sensitivity in patients with fibromyalgia syndrome without comorbid conditions. *Pain Medicine* 13(12):1639–1647 DOI 10.1111/j.1526-4637.2012.01523.x.
- Cohen J. 1988.** *Statistical power analysis for the behavioral sciences*. 2nd edition. Mahwah: Academic Press.
- Collado-Mateo D, Dominguez-Munoz FJ, Adsuar JC, Merellano-Navarro E, Olivares PR, Gusi N. 2016.** Reliability of the timed up and go test in fibromyalgia. *Rehabilitation Nursing* Epub ahead of print 26 Oct 2016 DOI 10.1002/rnj.307.
- Collado-Mateo D, Gallego-Diaz JM, Adsuar JC, Dominguez-Munoz FJ, Olivares PR, Gusi N. 2015.** Fear of falling in women with fibromyalgia and its relation with number of falls and balance performance. *BioMed Research International* 2015:589014 DOI 10.1155/2015/589014.
- Di Fabio RP, Seay R. 1997.** Use of the “fast evaluation of mobility, balance, and fear” in elderly community dwellers: validity and reliability. *Physical Therapy* 77(9):904–917 DOI 10.1093/ptj/77.9.904.
- Duncan PW, Weiner DK, Chandler J, Studenski S. 1990.** Functional reach: a new clinical measure of balance. *Journals of Gerontology Series A: Biological Sciences and Medical Sciences* 45(6):M192–M197.

- Duruturk N, Tuzun EH, Culhaoglu B. 2015.** Is balance exercise training as effective as aerobic exercise training in fibromyalgia syndrome?. *Rheumatology International* 35(5):845–854 DOI 10.1007/s00296-014-3159-z.
- Esteve-Vives J, Rivera Redondo J, Isabel Salvat M, De Gracia Blanco M, De Miquel CA. 2007.** Proposal for a consensus version of the Fibromyalgia Impact Questionnaire (FIQ) for the Spanish population. *Reumatologia Clinica* 3(1):21–24 DOI 10.1016/S1699-258X(07)73594-5.
- Gschwind YJ, Schoene D, Lord SR, Ejupi A, Valenzuela T, Aal K, Woodbury A, Delbaere K. 2015.** The effect of sensor-based exercise at home on functional performance associated with fall risk in older people—a comparison of two exergame interventions. *European Review of Aging and Physical Activity* 12:1–9 DOI 10.1186/s11556-015-0156-5.
- Herrero R, Garcia-Palacios A, Castilla D, Molinari G, Botella C. 2014.** Virtual reality for the induction of positive emotions in the treatment of fibromyalgia: a pilot study over acceptability, satisfaction, and the effect of virtual reality on mood. *Cyberpsychology, Behavior and Social Networking* 17(6):379–384 DOI 10.1089/cyber.2014.0052.
- Huijnen IP, Verbunt JA, Meeus M, Smeets RJ. 2014.** Energy expenditure during functional daily life performances in patients with fibromyalgia. *Pain Practice* 15(8):748–756 DOI 10.1111/papr.12245.
- Lami MJ, Martinez MP, Sanchez AI, Miro E, Diener FN, Prados G, Guzman MA. 2016.** Gender differences in patients with fibromyalgia undergoing cognitive-behavioral therapy for insomnia: preliminary data. *Pain Practice* 16(2):E23–E34 DOI 10.1111/papr.12411.
- Lewis GN, Rosie JA. 2012.** Virtual reality games for movement rehabilitation in neurological conditions: how do we meet the needs and expectations of the users?. *Disability and Rehabilitation* 34(22):1880–1886 DOI 10.3109/09638288.2012.670036.
- Mortensen J, Kristensen LQ, Brooks EP, Brooks AL. 2015.** Women with fibromyalgia’s experience with three motion-controlled video game consoles and indicators of symptom severity and performance of activities of daily living. *Disability and Rehabilitation. Assistive Technology* 10(1):61–66 DOI 10.3109/17483107.2013.836687.
- Oliver K, Cronan T. 2002.** Predictors of exercise behaviors among fibromyalgia patients. *Preventive Medicine* 35(4):383–389 DOI 10.1006/pmed.2002.1084.
- Podsiadlo D, Richardson S. 1991.** The timed “Up & Go”: a test of basic functional mobility for frail elderly persons. *Journal of the American Geriatrics Society* 39(2):142–148 DOI 10.1111/j.1532-5415.1991.tb01616.x.
- Rutledge DN, Martinez A, Traska TK, Rose DJ. 2013.** Fall experiences of persons with fibromyalgia over 6 months. *Journal of Advanced Nursing* 69(2):435–448 DOI 10.1111/j.1365-2648.2012.06026.x.
- Scheffer AC, Schuurmans MJ, Van Dijk N, Van der Hooft T, De Rooij SE. 2010.** Reliability and validity of the visual analogue scale for fear of falling in older persons. *Journal of the American Geriatrics Society* 58(11):2228–2230 DOI 10.1111/j.1532-5415.2010.03105.x.

- Segura-Jimenez V, Aparicio VA, Alvarez-Gallardo IC, Carbonell-Baeza A, Tornero-Quinones I, Delgado-Fernandez M. 2015.** Does body composition differ between fibromyalgia patients and controls? the al-Andalus project. *Clinical and Experimental Rheumatology* **33**(1 Suppl 88):S25–S32.
- Skip Rizzo A, Lange B, Suma EA, Bolas M. 2011.** Virtual reality and interactive digital game technology: new tools to address obesity and diabetes. *Journal of Diabetes Science and Technology* **5**(2):256–264 DOI [10.1177/193229681100500209](https://doi.org/10.1177/193229681100500209).
- Tomas-Carus P, Gusi N, Hakkinen A, Hakkinen K, Raimundo A, Ortega-Alonso A. 2009.** Improvements of muscle strength predicted benefits in HRQOL and postural balance in women with fibromyalgia: an 8-month randomized controlled trial. *Rheumatology* **48**(9):1147–1151 DOI [10.1093/rheumatology/kep208](https://doi.org/10.1093/rheumatology/kep208).
- Van Diest M, Stegenga J, Wortche HJ, Verkerke GJ, Postema K, Lamoth CJ. 2016.** Exergames for unsupervised balance training at home: a pilot study in healthy older adults. *Gait & Posture* **44**:161–167 DOI [10.1016/j.gaitpost.2015.11.019](https://doi.org/10.1016/j.gaitpost.2015.11.019).
- Walitt B, Nahin RL, Katz RS, Bergman MJ, Wolfe F. 2015.** The prevalence and characteristics of fibromyalgia in the 2012 national health interview survey. *PLOS ONE* **10**(9):e0138024 DOI [10.1371/journal.pone.0138024](https://doi.org/10.1371/journal.pone.0138024).
- Walker J. 2016.** Fibromyalgia: clinical features, diagnosis and management. *Nursing Standard* **31**(5):51–63 DOI [10.7748/ns.2016.e10550](https://doi.org/10.7748/ns.2016.e10550).
- Wolfe F, Clauw DJ, Fitzcharles MA, Goldenberg DL, Katz RS, Mease P, Yunus MB. 2010.** The American College of Rheumatology preliminary diagnostic criteria for fibromyalgia and measurement of symptom severity. *Arthritis Care & Research* **62**(5):600–610 DOI [10.1002/acr.20140](https://doi.org/10.1002/acr.20140).
- Wolfe F, Smythe HA, Yunus MB, Bennett RM, Bombardier C, Goldenberg DL, Tugwell P, Campbell SM, Abeles M, Clark P, Fam AG, Farber SJ, Fiechtner JJ, Michael Franklin C, Gatter RA, Hamaty D, Lessard J, Lichtbroun AS, Masi AT, McCain GA, John Reynolds W, Romano TJ, Jon Russell I, Sheon RP. 1990.** The American college of rheumatology 1990 criteria for the classification of fibromyalgia. Report of the multicenter criteria committee. *Arthritis and Rheumatism* **33**(2):160–172 DOI [10.1002/14651858.CD011336](https://doi.org/10.1002/14651858.CD011336).