

Temporal and spatial intraspecific variation of primary seed dispersal in *Scrophularia canina* L., a widespread plant with unspecialised diaspores

Supplemental data

Table S1. Skewness index, kurtosis index and slope value per year and compass direction.

Figure S1. Location of the investigated population and spatial distribution of studied individuals in this population of *Scrophularia canina*. White painted compass directions are shown around all individuals. Source: Google Earth.

Figure S2. Temporal pattern of seed dispersal of the 10 studied individuals of *Scrophularia canina* during two years.

Figure S3. Seed distribution pattern (ln-transformed) in *Scrophularia canina* according to compass direction and year.

Figure S4. Seed distribution pattern (ln-transformed) in *Scrophularia canina* according to individual (individuals 1–5) and year.

Figure S4-continued. Seed distribution pattern (ln-transformed) in *Scrophularia canina* according to individual (individuals 6–10) and year.

Figure S5. Schematic representation of dispersal distance percentiles in *Scrophularia canina* according to compass direction per individual (individuals 1–5) and year. 25th, 50th, 75th, 90th and 99th percentiles correspond to the distance reached by 25%, 50%, 75%, 90% and 99% of dispersed seeds, respectively. Black dotted lines indicate plant lateral spread.

Figure S5-continued. Schematic representation of dispersal distance percentiles in *Scrophularia canina* according to compass direction per individual (individuals 6–10) and year. 25th, 50th, 75th, 90th and 99th percentiles correspond to distances reached by 25%, 50%, 75%, 90% and 99% of dispersed seeds, respectively. Black dotted lines indicate plant lateral spread.

Table S1. Skewness index, kurtosis index and slope value per year and compass direction.

		Skewness		Kurtosis		Slope	
		Maximum	Minimum	Maximum	Minimum	Maximum	Minimum
First year	N	4.78	1.40	27.51	1.20	-4.97	-1.75
	S	3.89	1.68	19.35	3.92	-4.58	-1.00
	E	4.62	1.47	27.79	1.16	-4.60	-1.48
	W	5.20	0.93	30.91	-0.08	-5.21	-1.41
Second year	N	4.69	1.33	24.56	1.78	-3.13	-0.77
	S	4.03	0.75	18.49	0.31	-2.98	-0.45
	E	3.19	0.93	12.13	-0.16	-3.04	-0.62
	W	5.40	0.71	38.60	-0.53	-2.45	-0.75

Figure S1

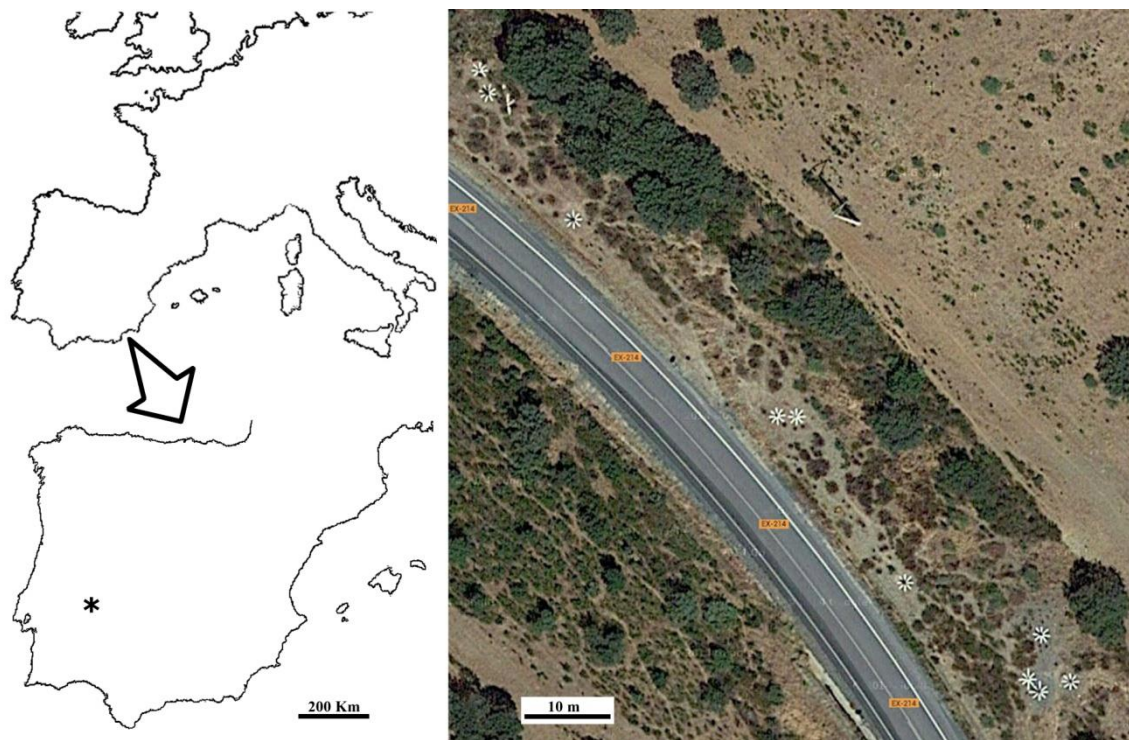


Figure S2

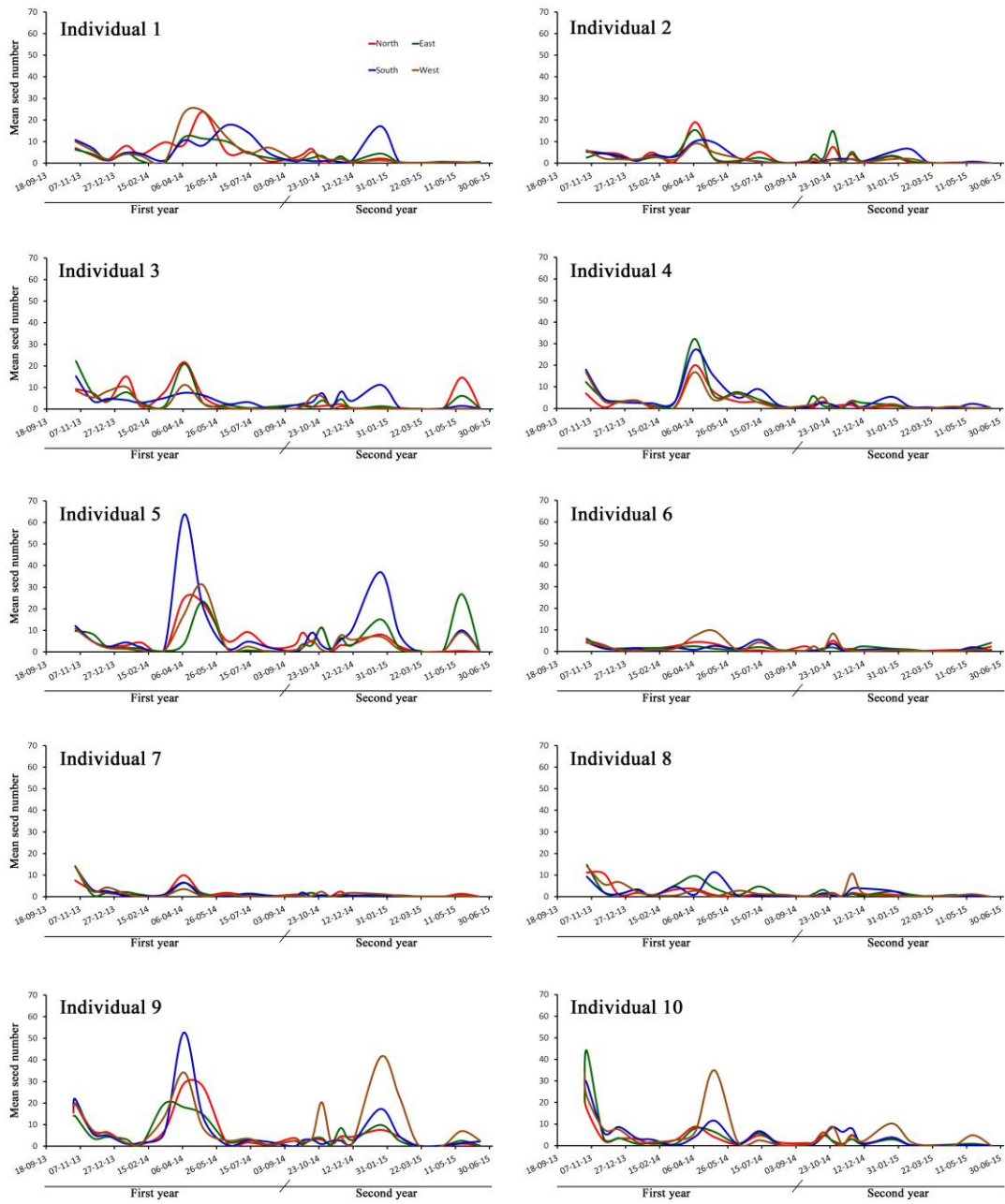


Figure S3

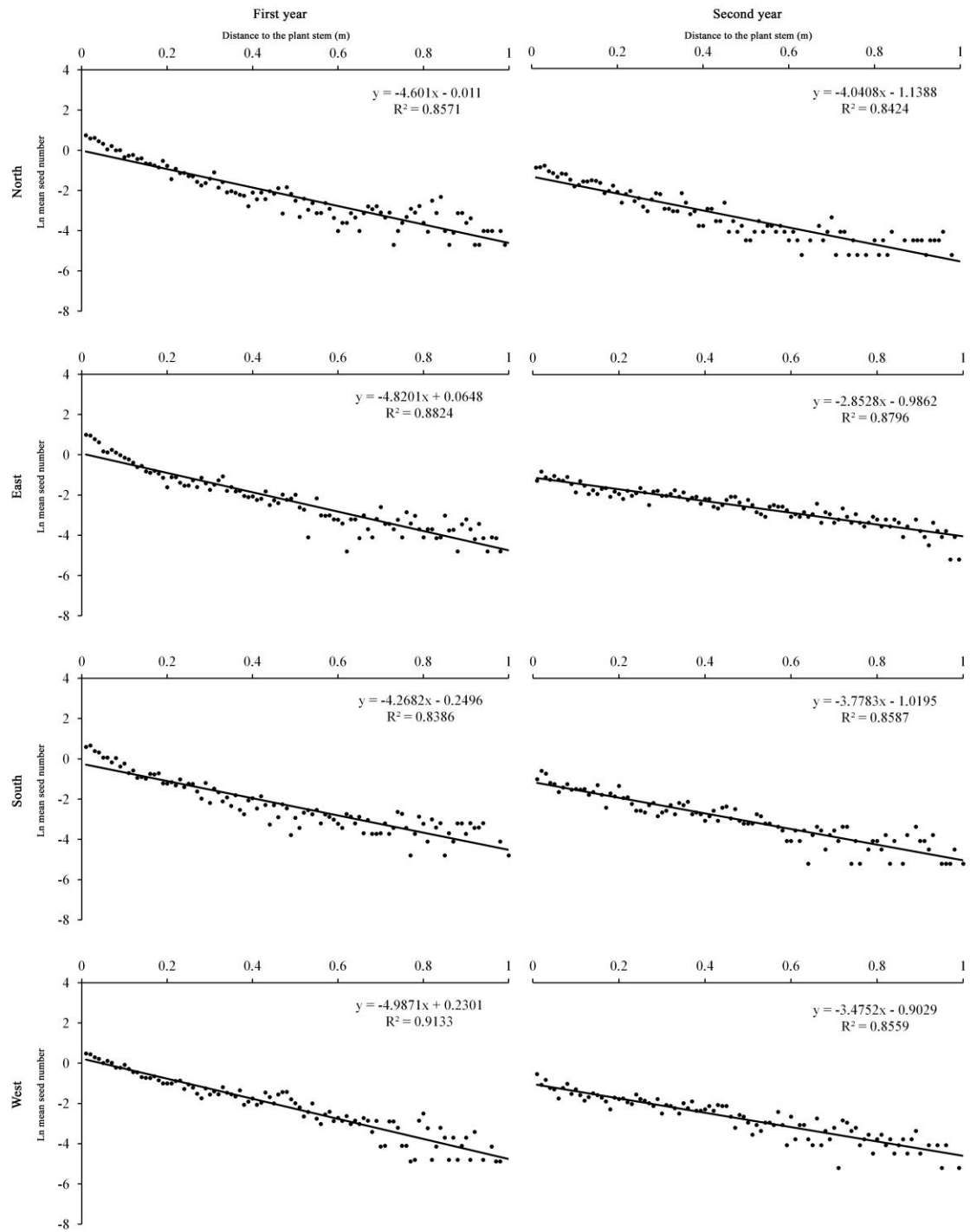


Figure S4

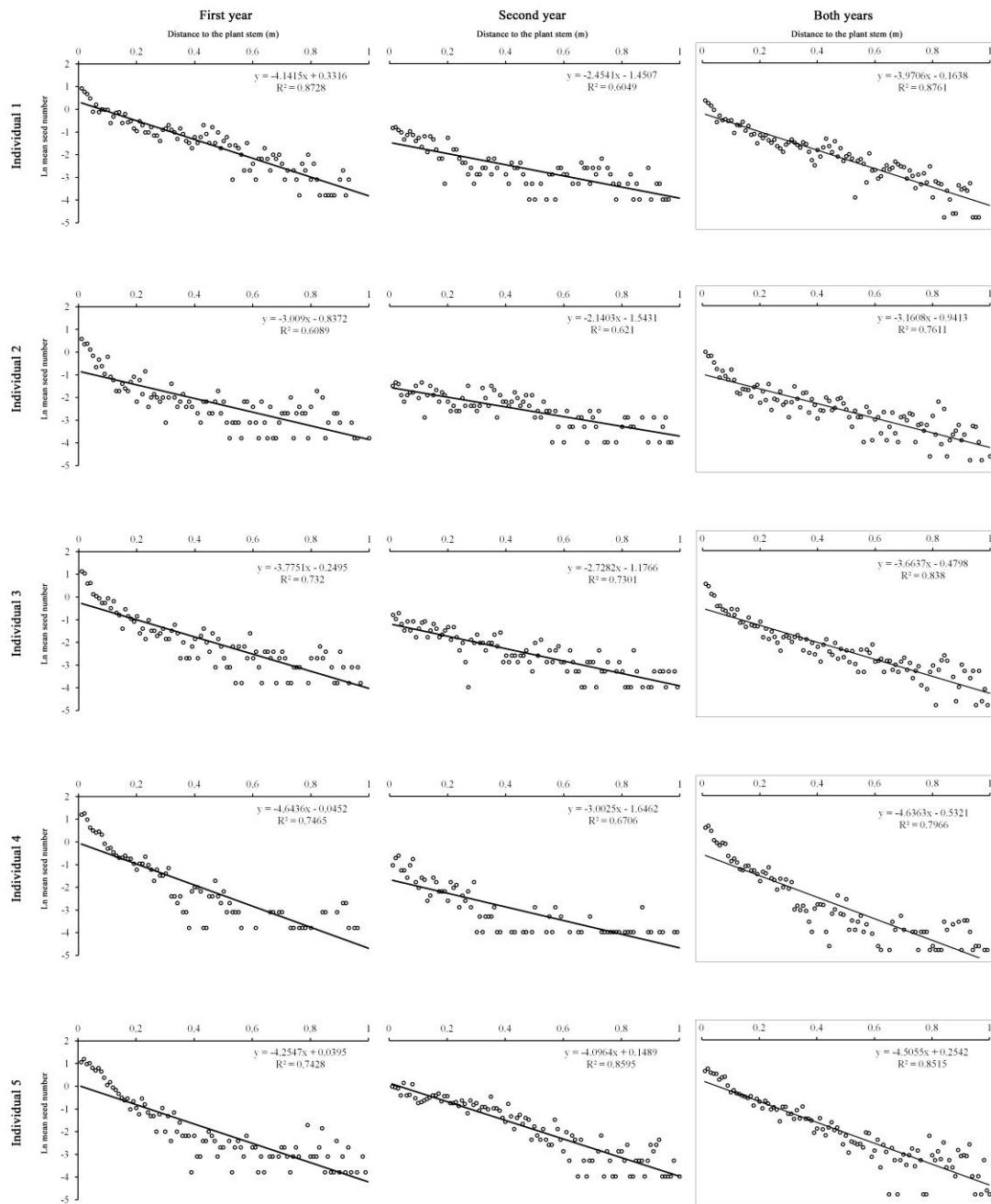


Figure S4-continued

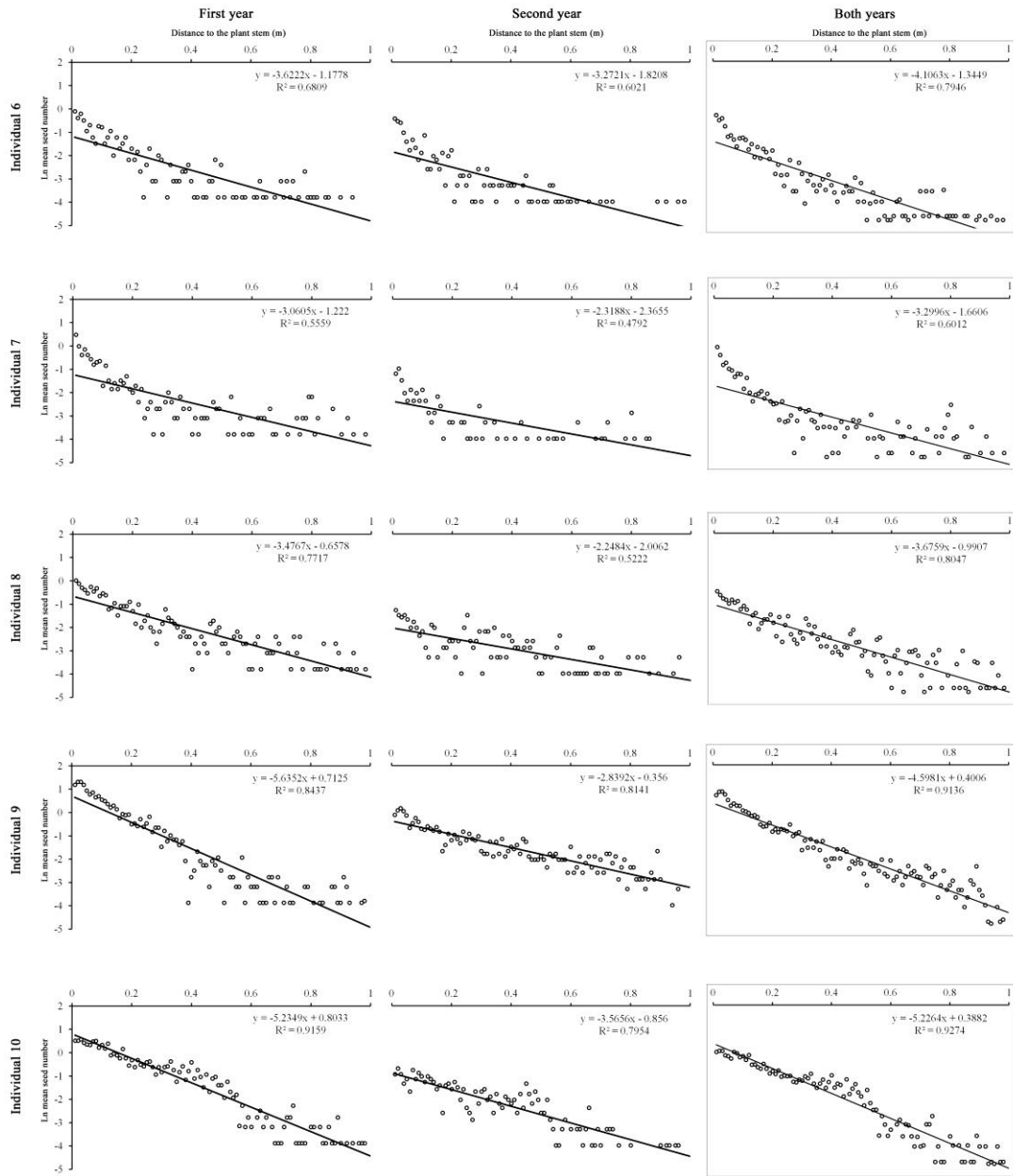


Figure S5

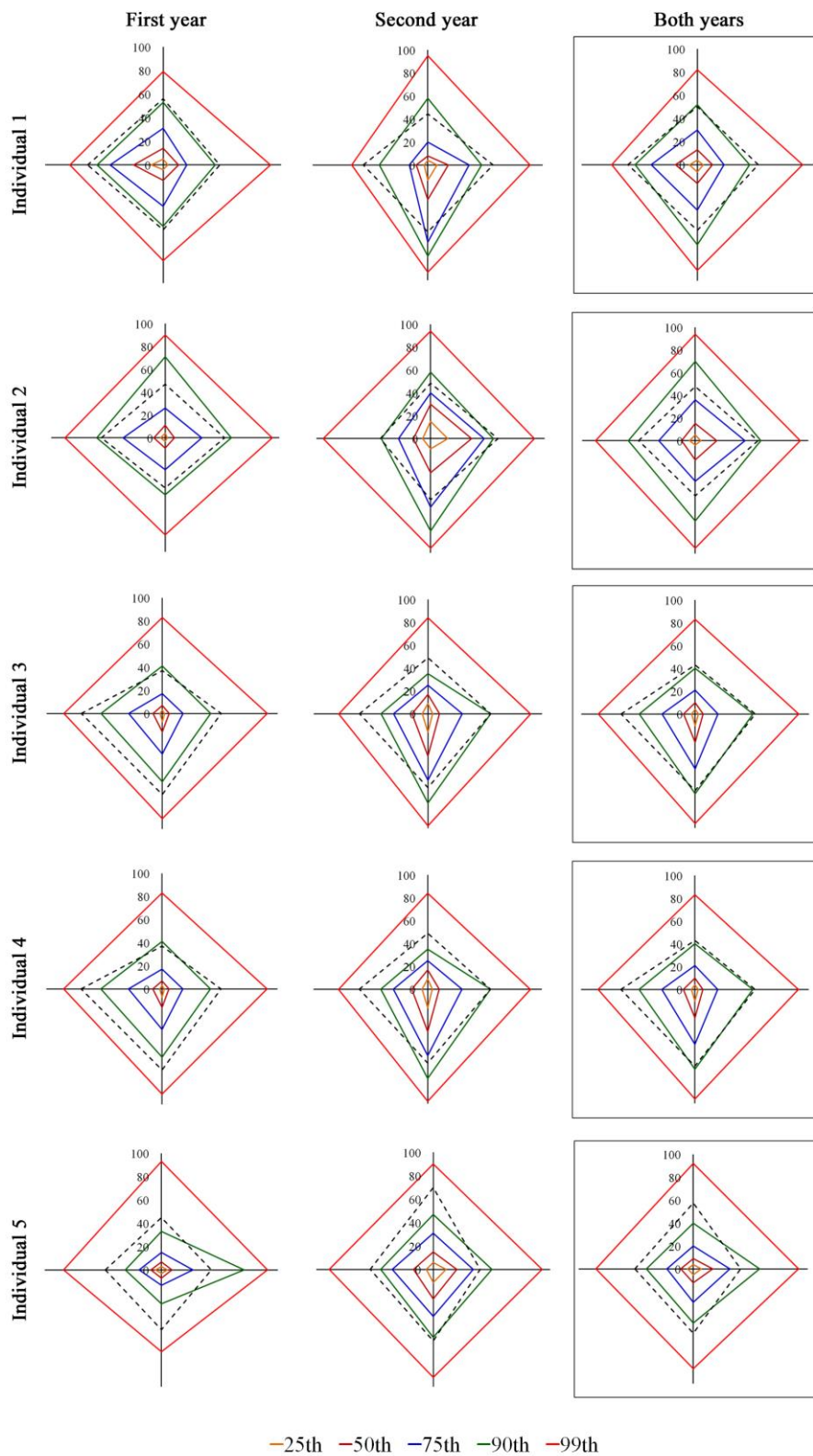


Figure S5-continued

