







Correction

Correction: Sanchez-Collado et al. Orai2 Modulates Store-Operated Ca²⁺ Entry and Cell Cycle Progression in Breast Cancer Cells. *Cancers* 2021, 14, 114

Jose Sanchez-Collado ^{1,†}, Jose J. Lopez ^{1,†} , Carlos Cantonero ¹, Isaac Jardin ¹ , Sergio Regodón ¹, Pedro C. Redondo ¹ , Juan Gordillo ², Tarik Smani ^{3,4} , Gines M. Salido ¹  and Juan A. Rosado ^{1,*} 

- ¹ Cellular Physiology Research Group, Department of Physiology, Institute of Molecular Pathology Biomarkers (IMPB), University of Extremadura, 10003 Caceres, Spain
- ² Pathology Service, Hospital de Merida, 06800 Merida, Spain
- ³ Department of Medical Physiology and Biophysics, University of Seville, 41004 Seville, Spain
- ⁴ Group of Cardiovascular Pathophysiology, Institute of Biomedicine of Seville, University Hospital of Virgen del Rocio, University of Seville, CSIC, 41004 Seville, Spain
- * Correspondence: jarosado@unex.es
- † These authors contributed equally to this work.

Error in Figure

In the original publication [1], there was a mistake in Figure 5, panes d and f as published. We have noticed that, in panels d and f, the images of TG in SKBR3 cells (d) have been unintentionally duplicated in panel f (T47D cells). The corrected Figure 5 appears below.



Citation: Sanchez-Collado, J.; Lopez, J.J.; Cantonero, C.; Jardin, I.; Regodón, S.; Redondo, P.C.; Gordillo, J.; Smani, T.; Salido, G.M.; Rosado, J.A.

Correction: Sanchez-Collado et al. Orai2 Modulates Store-Operated Ca²⁺ Entry and Cell Cycle Progression in Breast Cancer Cells. *Cancers* 2021, 14, 114. *Cancers* 2023, 15, 1290. <https://doi.org/10.3390/cancers15041290>

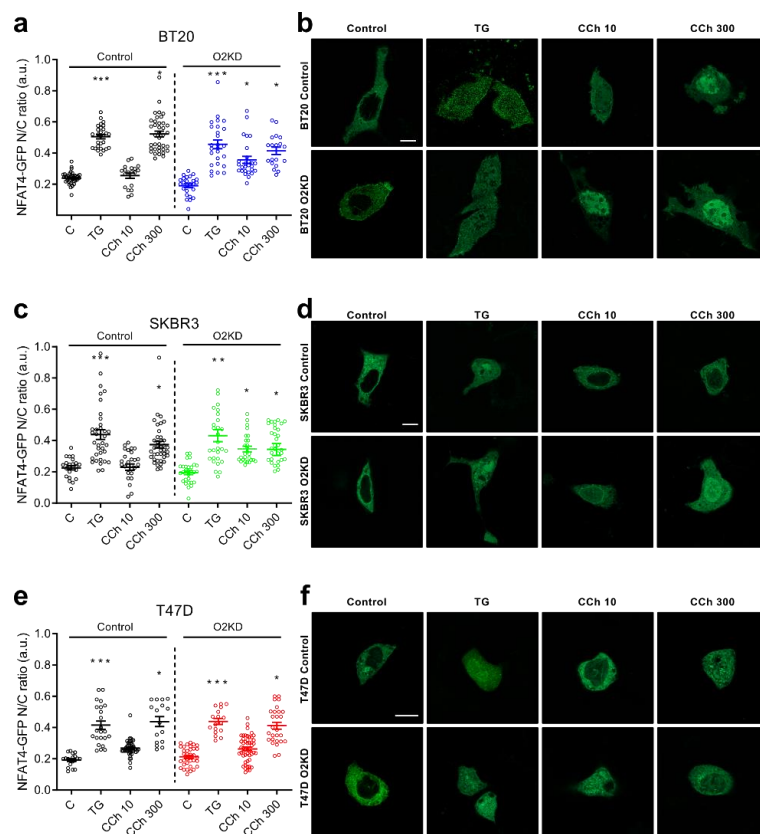
Received: 25 July 2022

Accepted: 3 November 2022

Published: 17 February 2023



Copyright: © 2023 by the authors. Licensee MDPI, Basel, Switzerland. This article is an open access article distributed under the terms and conditions of the Creative Commons Attribution (CC BY) license (<https://creativecommons.org/licenses/by/4.0/>).



The authors apologize for any inconvenience caused and state that the scientific conclusions are unaffected. This correction was approved by the Academic Editor. The original publication has also been updated.

Reference

1. Sanchez-Collado, J.; Lopez, J.J.; Cantonero, C.; Jardin, I.; Regodón, S.; Redondo, P.C.; Gordillo, J.; Smani, T.; Salido, G.M.; Rosado, J.A. Orai2 Modulates Store-Operated Ca^{2+} Entry and Cell Cycle Progression in Breast Cancer Cells. *Cancers* **2022**, *14*, 114. [[CrossRef](#)] [[PubMed](#)]

Disclaimer/Publisher's Note: The statements, opinions and data contained in all publications are solely those of the individual author(s) and contributor(s) and not of MDPI and/or the editor(s). MDPI and/or the editor(s) disclaim responsibility for any injury to people or property resulting from any ideas, methods, instructions or products referred to in the content.