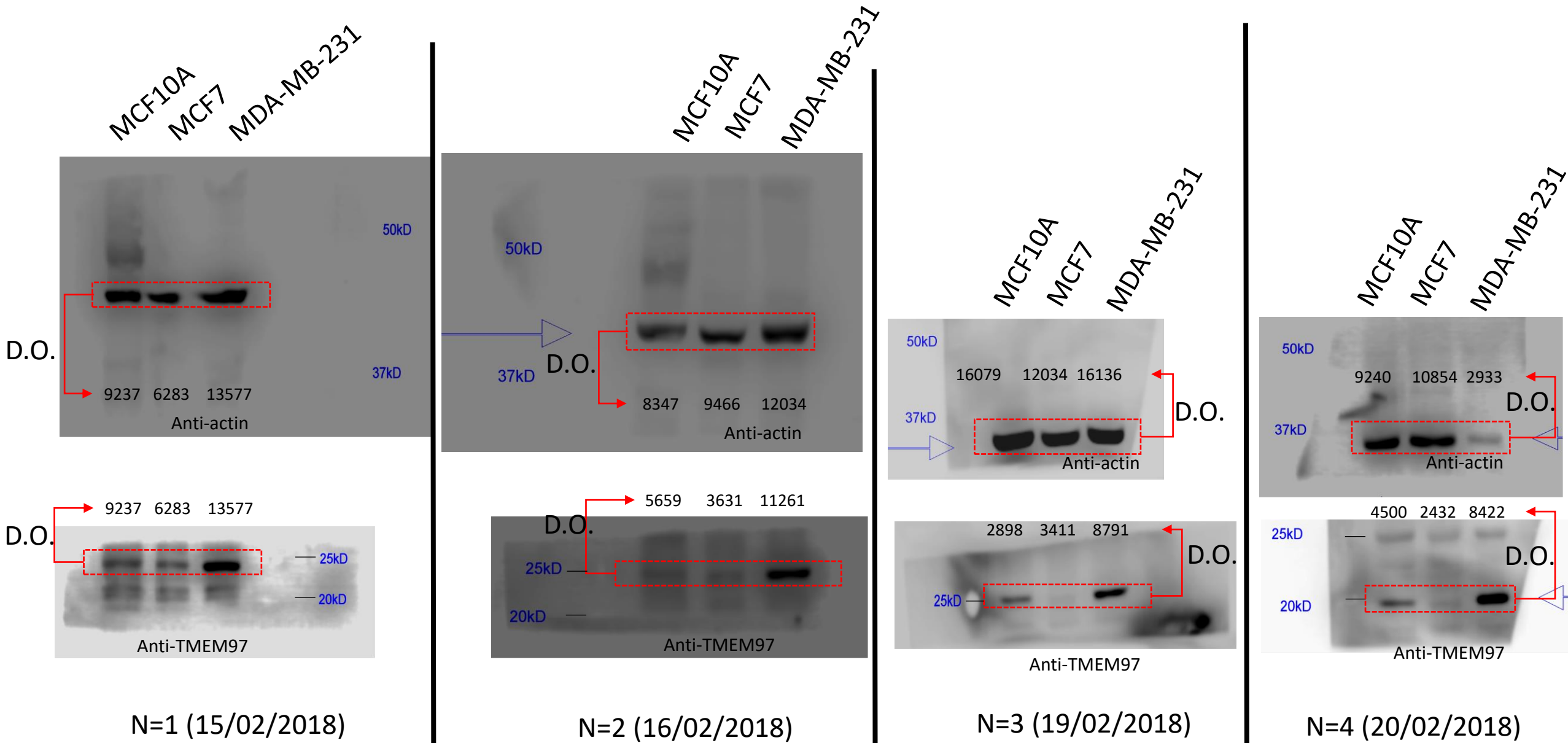


WB FIGURE 1a: Expression of TMEM97 in different breast cancer cell lines



D.O.: optic densitometry values

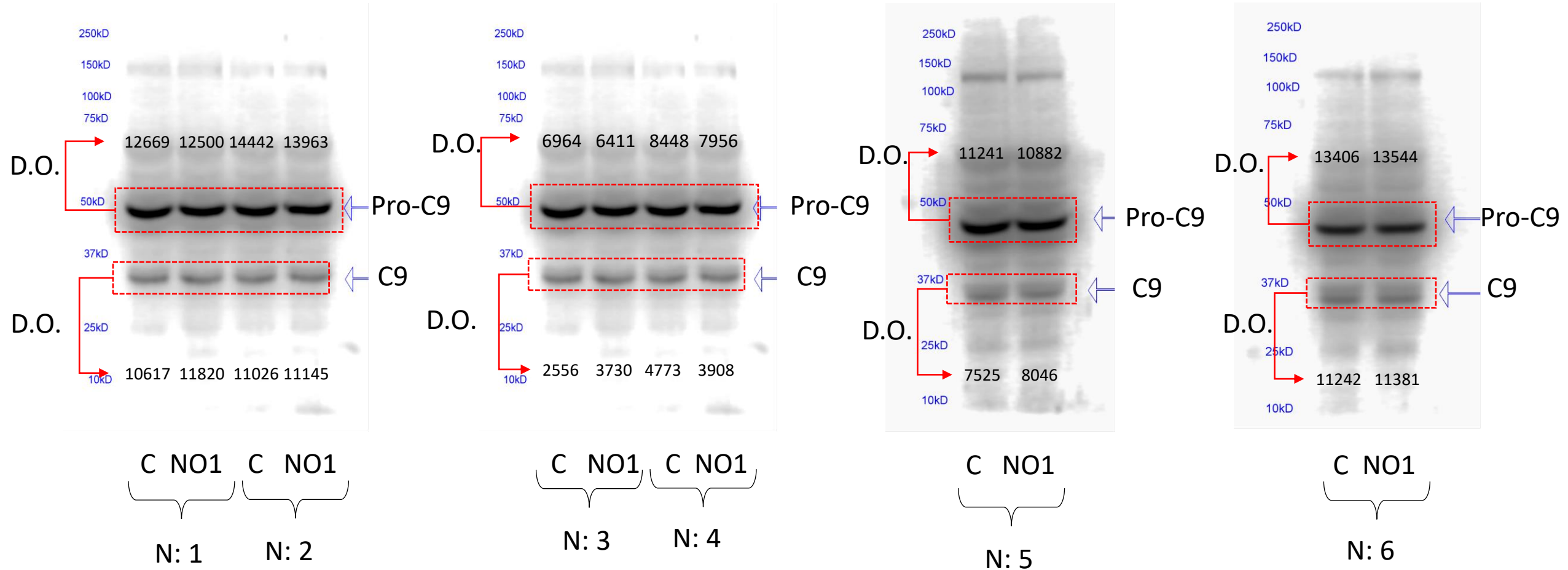
WB FIGURE 5a: Caspase 9 vs NO1

(21/10/2018)

(25/10/2018)

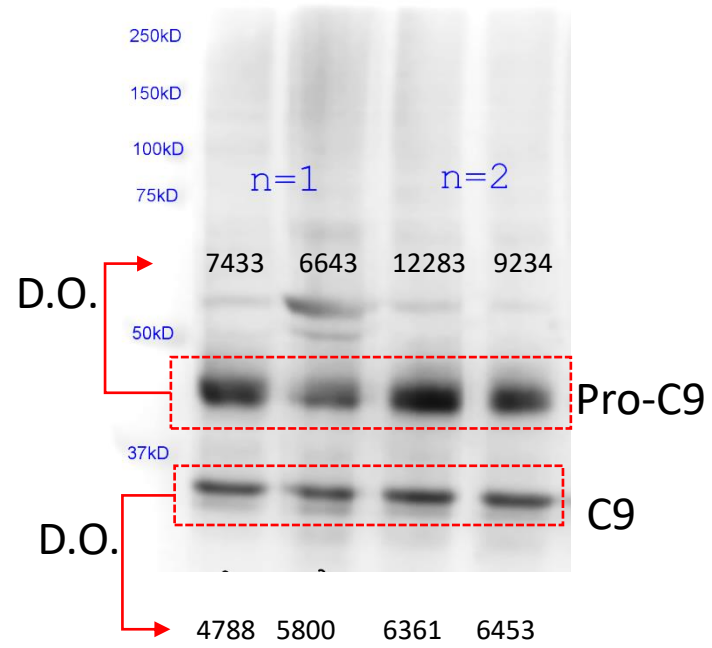
(30/10/2018)

(01/11/2018)



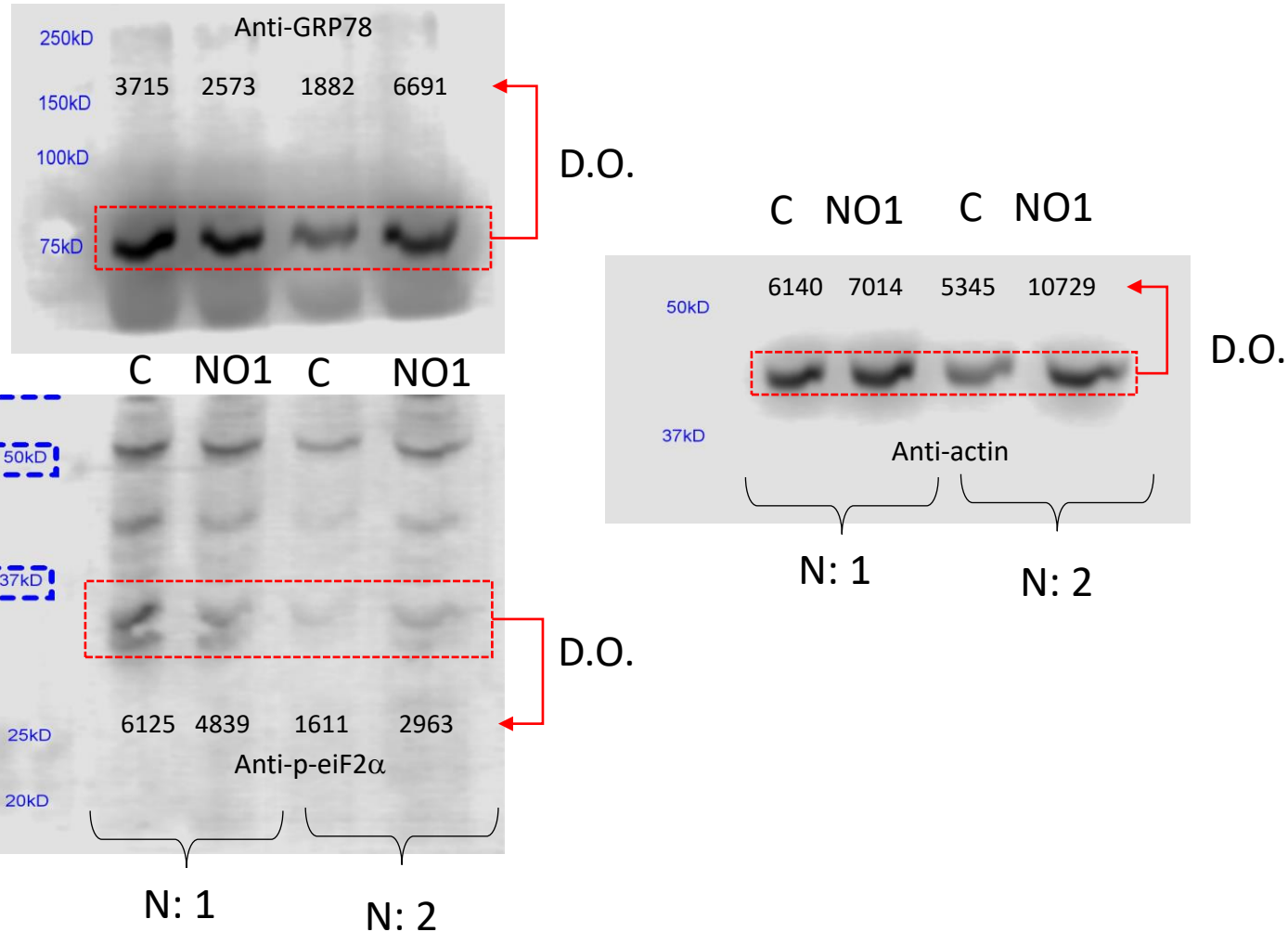
WB FIGURE 5a: Caspase 9 vs NO1

(10/01/2020)

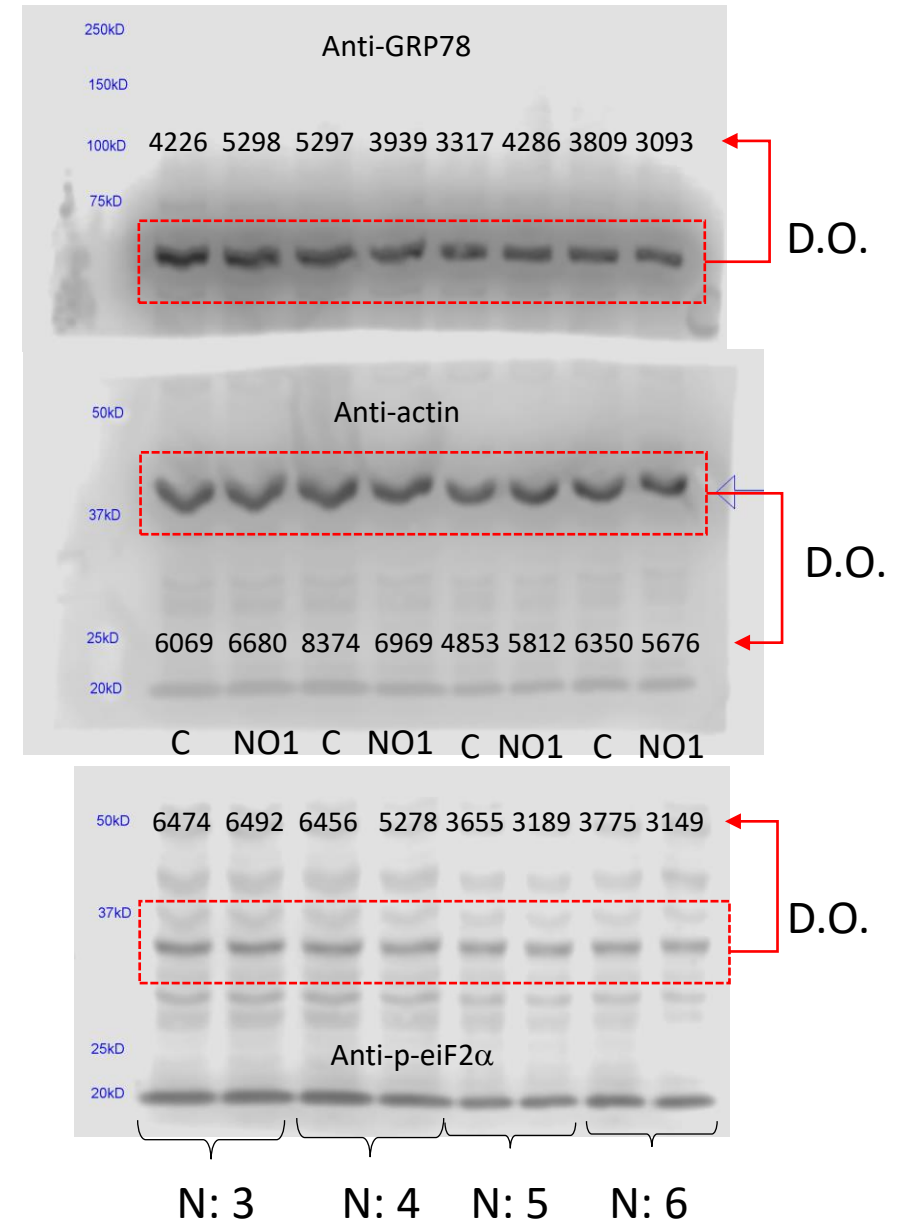


WB FIGURE 5b: GRP78 and p-eiF2 α Vs NO1 in MDA-MB-231 cells

(20/07/2018)



(06/09/2018)

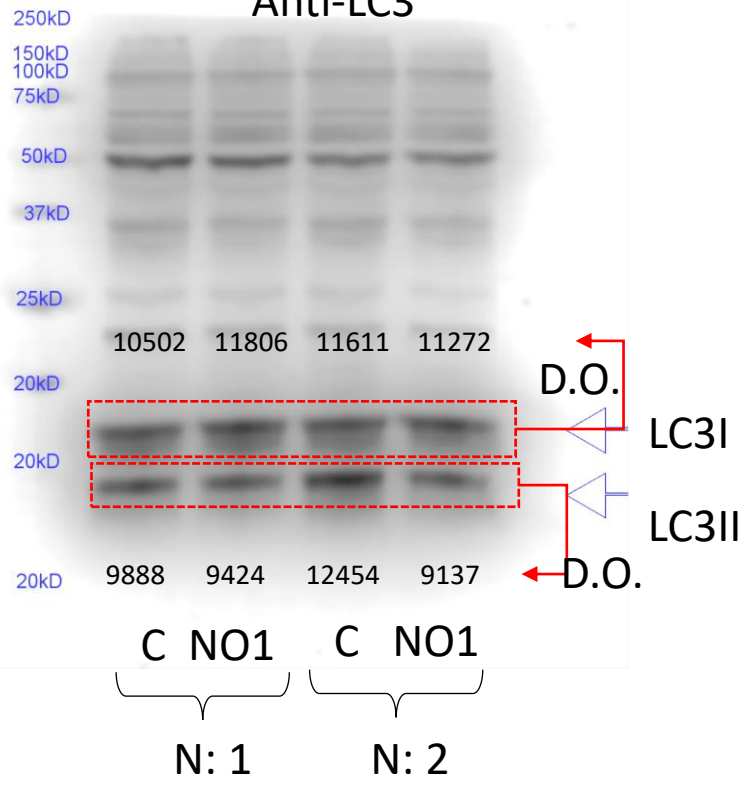


D.O.: optic densitometry values

WB FIGURE 5c: LC3 vs NO1 in MDA-MB-231 cells

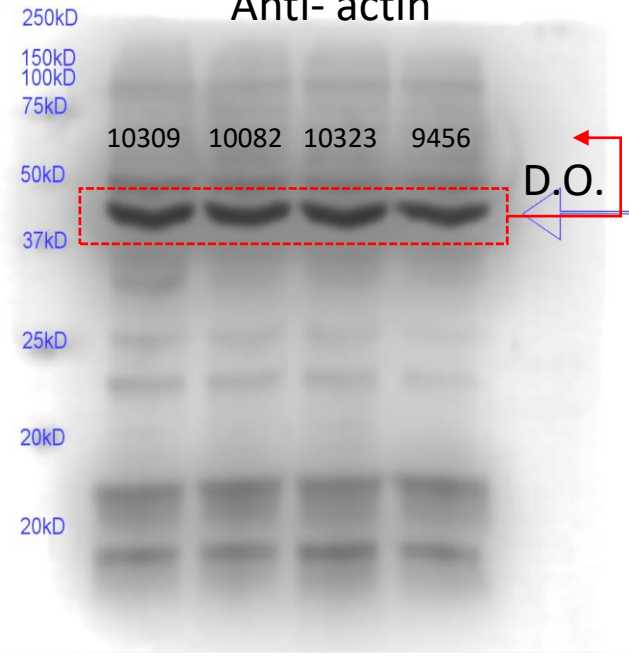
(07/09/2018)

Anti-LC3

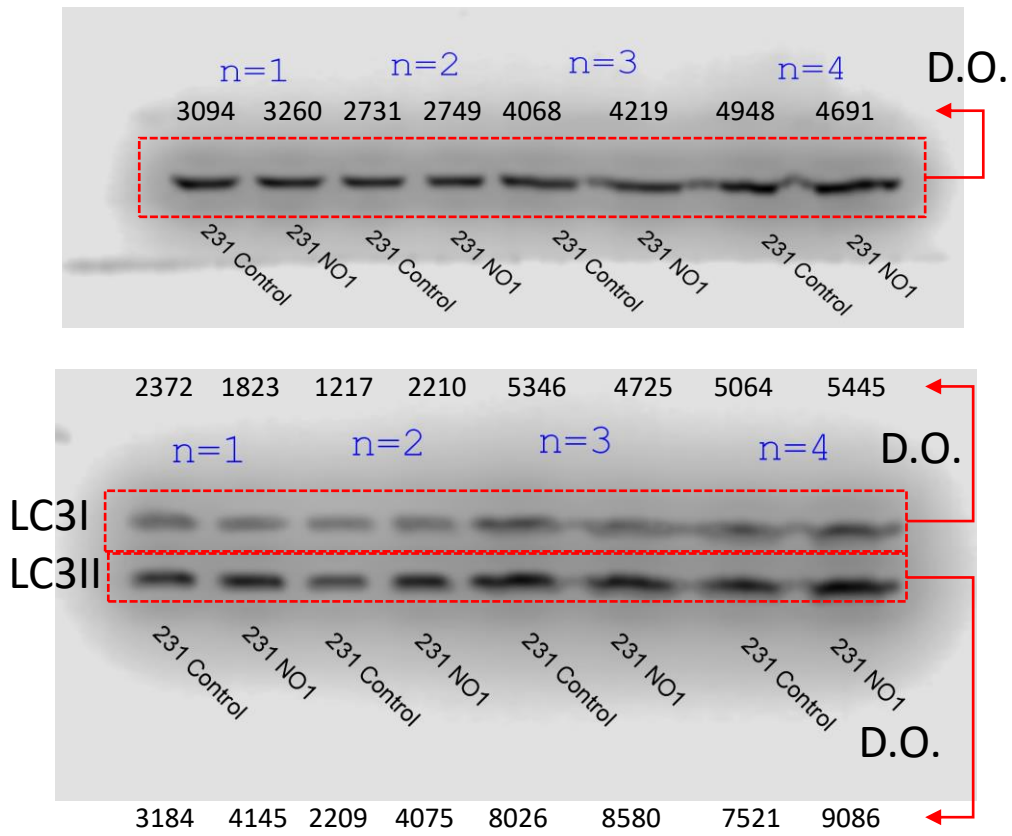


(11/09/2018)

Anti-actin



(18/09/2018)



WB FIGURE 7d: IP STIM1 /Orai1 Vs SM21 in MDA-MB-231 (I)

(15/11/2017)

IP: Anti-STIM1

1190kDa
135kDa
100kDa
80kDa

2493 3013 2750 2627

D.O.

(01/12/2017)

IP: Anti-STIM1

150kD
100kD
75kD

5196 5398 7823 4783

D.O.

(17/12/2017)

IP: Anti-STIM1

5970 8549 11672 7868

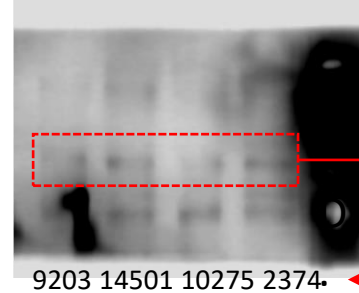
D.O.

(18/12/2017)

IP: Anti-STIM1

2775 4857 4565 3246

D.O.



9203 14501 10275 2374

D.O.

3200 4271 5174 2782

D.O.

WB: Anti-Orai1

R TG R TG

SM21

1090 1511 1286 0893

D.O.

WB: Anti-Orai1

R TG R TG

SM21

50kD
37kD

2723 4875 4307 4227

D.O.

WB: Anti-Orai1

R TG R TG

SM21

2445 2422 5083 3648

D.O.

WB: Anti-Orai1

R TG R TG

SM21

2374 3917 3512 2937

D.O.

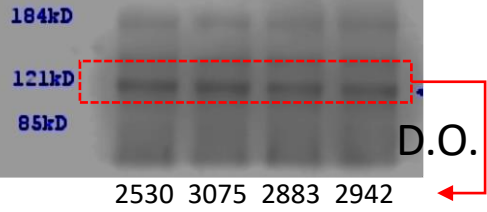
R TG R TG

SM21

WB FIGURE 7d: IP STIM1 /Orai1 Vs SM21 in MDA-MB-231 (II)

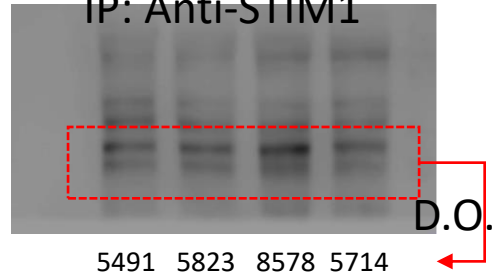
(09/11/2017)

IP: Anti-STIM1



(01/12/2017)

IP: Anti-STIM1



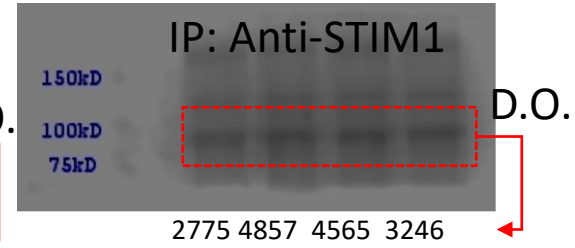
(09/03/2018)

IP: Anti-STIM1



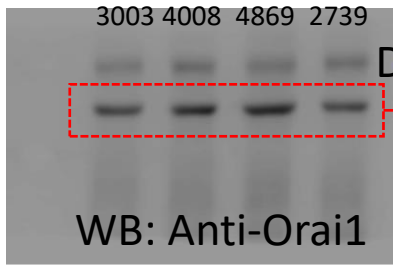
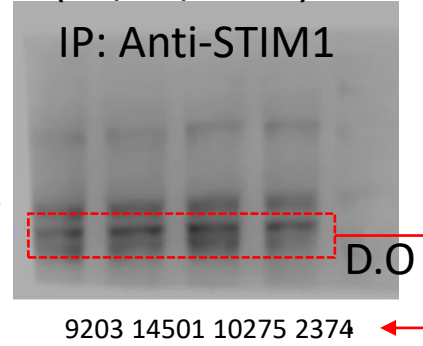
(14/03/2018)

IP: Anti-STIM1



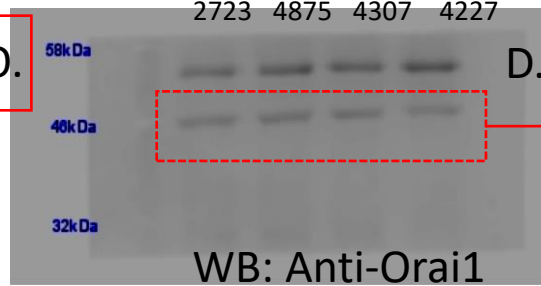
(18/12/2017)

IP: Anti-STIM1



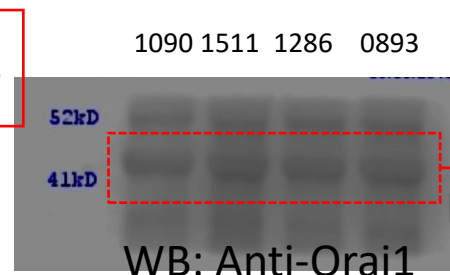
WB: Anti-Orai1

R TG R TG
SM21



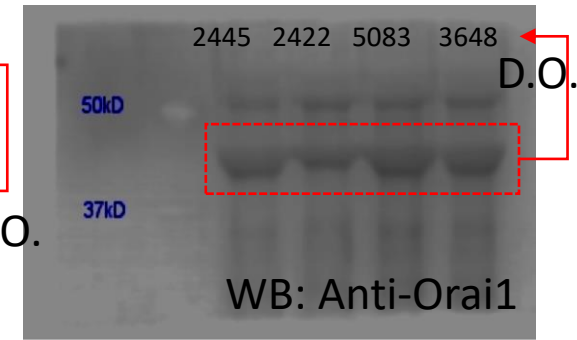
WB: Anti-Orai1

R TG R TG
SM21



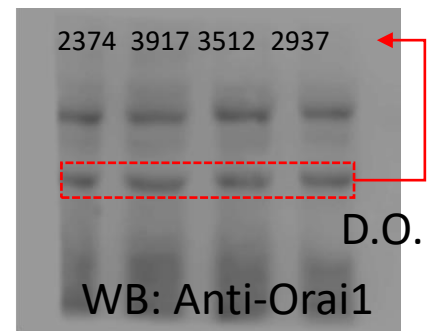
WB: Anti-Orai1

R TG R TG
SM21



WB: Anti-Orai1

R TG R TG
SM21

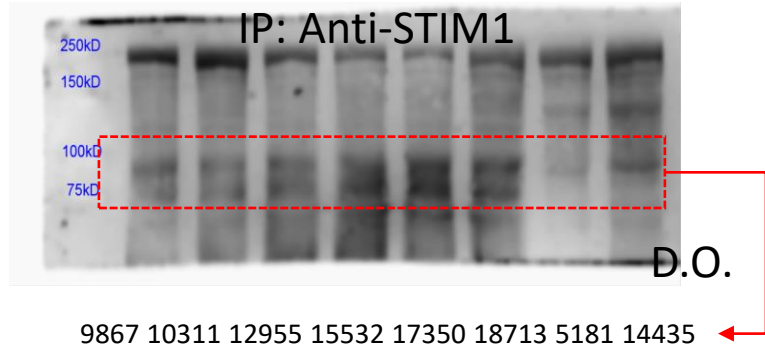


WB: Anti-Orai1

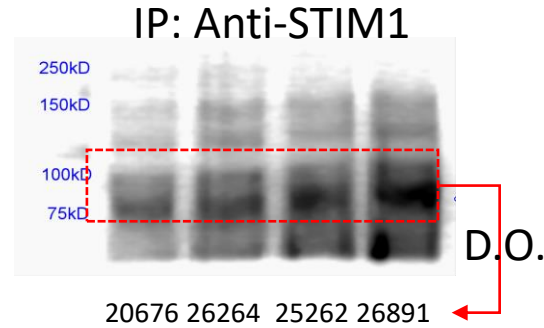
R TG R TG
SM21

WB FIGURE 7d: IP STIM1 /Orai1 Vs NO1

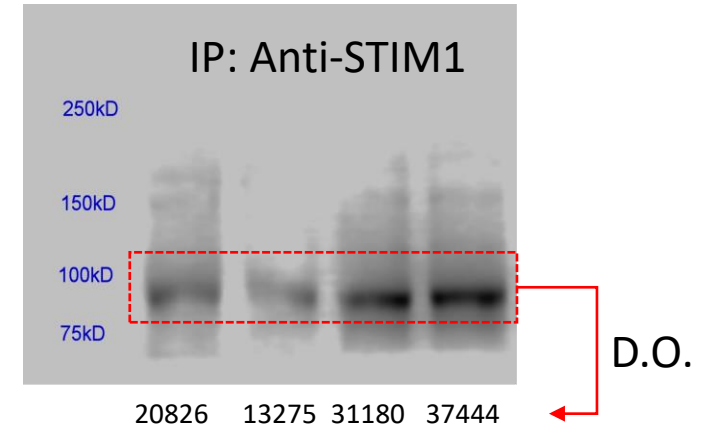
N1 & N2 (16/09/2018)



N3: (17/09/2018)

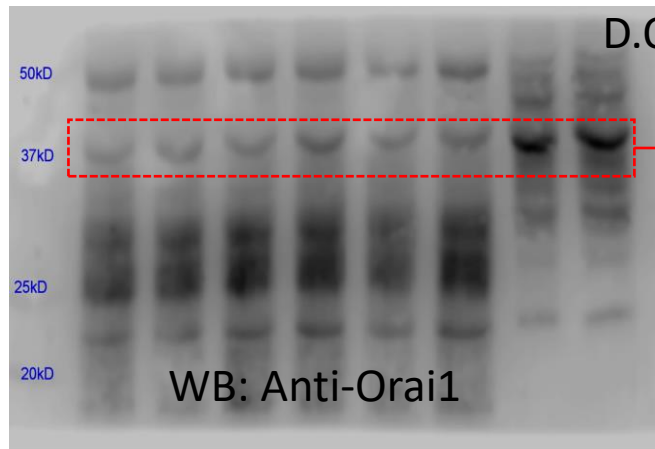


N4: (30/09/2018)



5896 6507 7111 8644 3843 6120 11593 12078

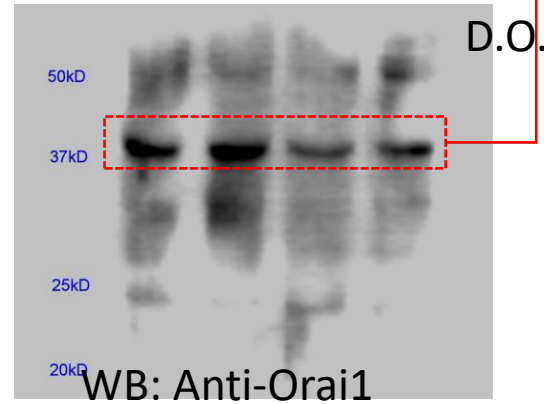
D.O.



R TG R TG
NO1 NO1

25882 32932 21076 17473

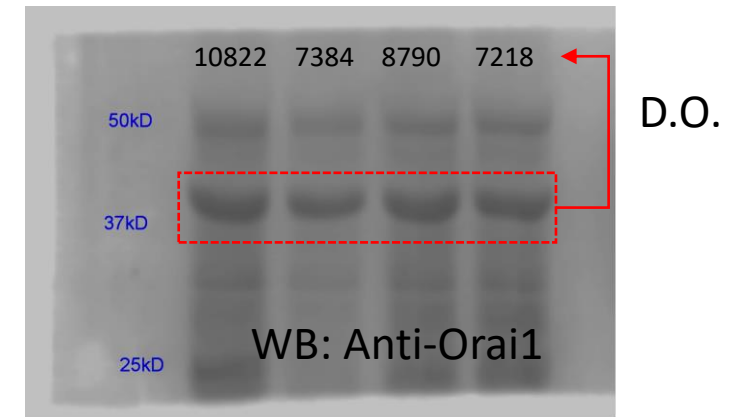
D.O.



R TG R TG
NO1 NO1

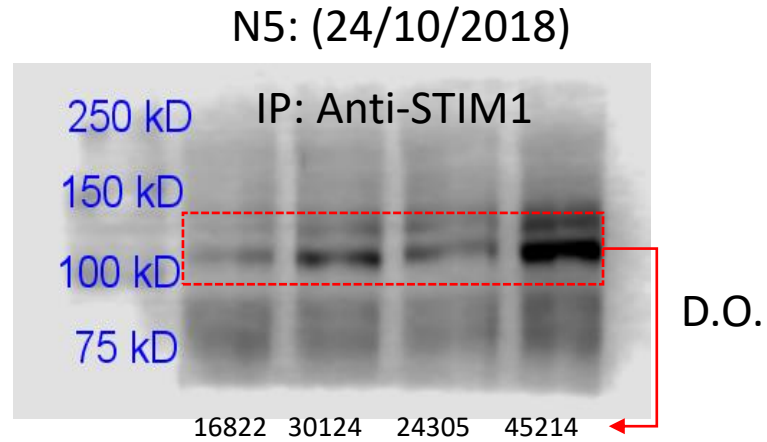
10822 7384 8790 7218

D.O.



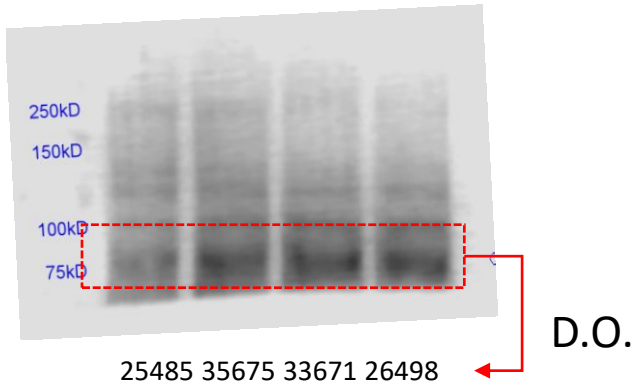
R TG R TG
NO1 NO1

WB FIGURE 7d: IP STIM1 /Orai1 Vs NO1



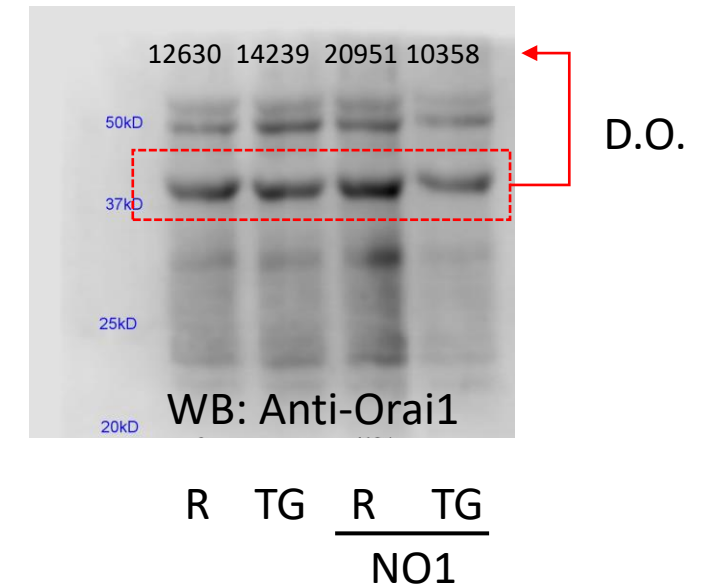
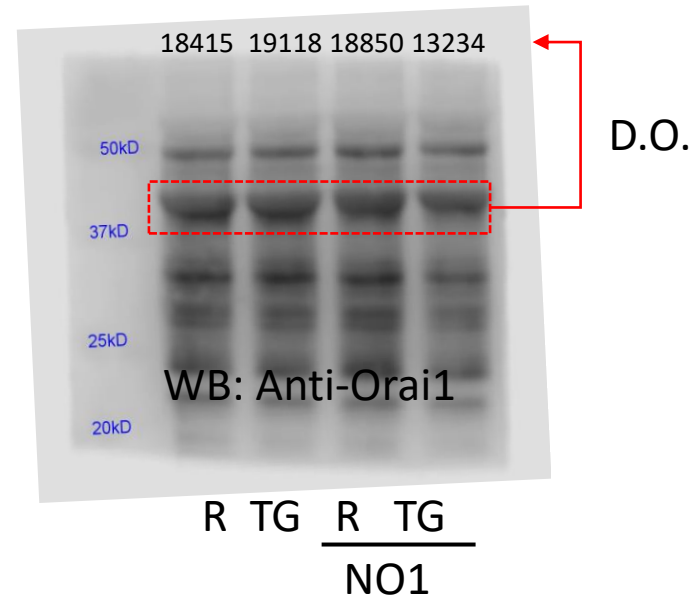
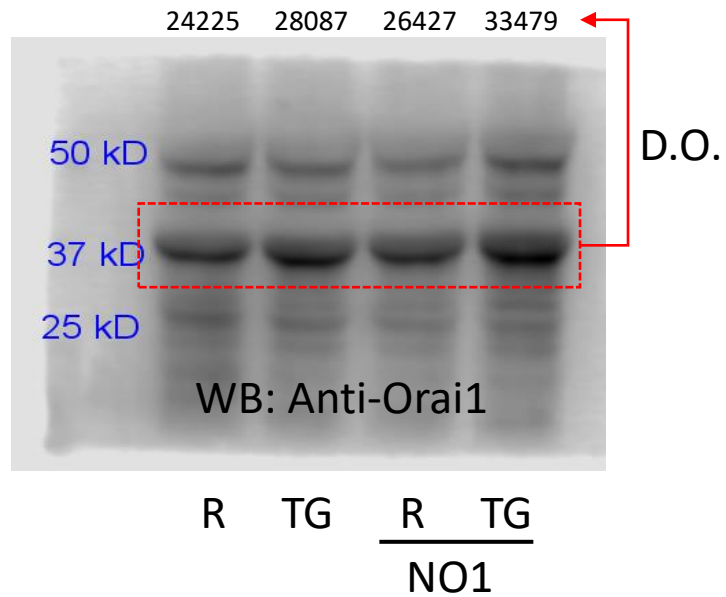
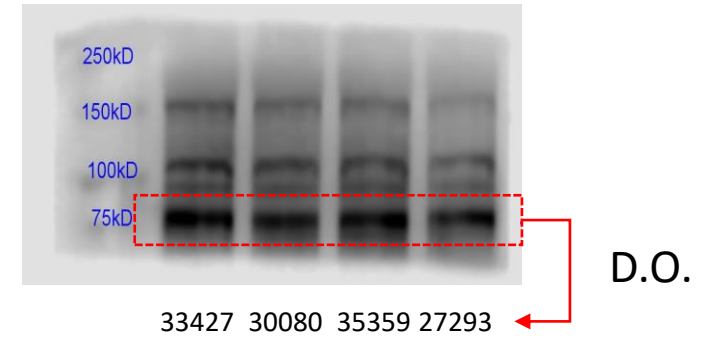
N6: (30/10/2018)

IP: Anti-STIM1



N7: (2/11/2018)

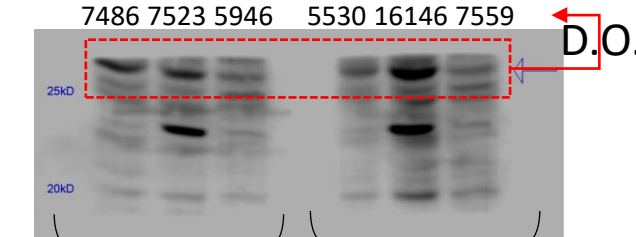
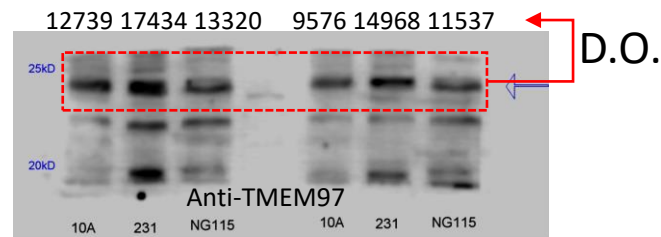
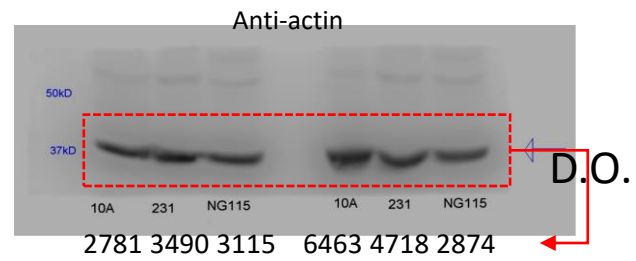
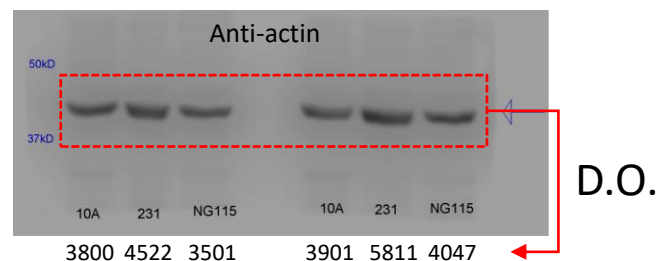
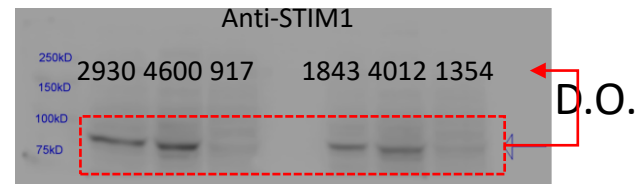
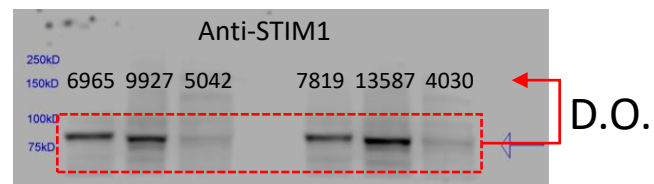
IP: Anti-STIM1



WB FIGURE 8a: WB STIM1 and TMEM97 in MCF10A, MDA-MB-231 and NG115-401L

(09/04/2019)

(14/04/2019)



N: 1

N: 2

N: 3

N: 4